



i4311

PRODUCTIVITY
UNPLUGGED

INDUSTRIAL LABEL PRINTER WITH PORTABILITY

PRINT EVERYTHING YOU NEED, where you need it

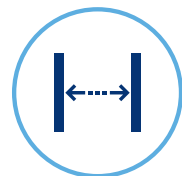
The first printer to deliver 101.6 mm wide labelling without cords or limits

Both exceptionally versatile and built to travel, the i4311 Industrial Label Printer with portability is redefining printing on the job. Print the labels you need up to 101.6 mm wide, right where you need to, with an all-day battery and ergonomic carrying handle. And get the precision and ease of use that only come Brady printing technology.



Set Up Shop Anywhere

Eliminate wasted trips and time. Easily transport the lightweight i4311 (just 5.9 kg with battery) between jobsites or throughout a facility - and set up your print station where work happens.



Print Any Label You Need

Get the printer that will deliver all the right labels for the job, from small 6.3 mm wide wire and server rack labels to 101.6 mm wide pipe markers and arc flash labels.



Go All Day Without Plugging In

Its long-lasting, swappable battery lets you print up to 5,000 labels on a single charge to keep you on the job, not at a wall socket.



Frustration-Free, Guaranteed

Powered by LabelSense™ technology, the i4311 features automatic material recognition, setup and calibration - plus lets you connect any way you need and create labels from a phone, tablet or laptop.



▶ Scan to watch the i4311 overview video.



DESIGNED WITH YOU IN MIND

Finally, a printer that works the way your job demands

Developed through rigorous R&D and direct user feedback, the i4311 delivers performance and versatility you won't find anywhere else - all to eliminate your biggest labelling bottlenecks and frustrations.



SAFETY & FACILITY MANAGERS

Drive efficiency, minimise risk and boost compliance

- ▶ Eliminate time-consuming trips to printer stations across large facilities
- ▶ Ensure floor-to-ceiling compliance with a wide variety of labelling options
- ▶ Increase facility safety and organisation with professional, durable identification

Key applications:

- ▶ Safety labels, signs and tags
- ▶ Pipe marking
- ▶ Equipment labels
- ▶ Lean/5S



CONTRACTORS

Master the jobsite and your billable hours

- ▶ Skip time-wasting trailer trips and maximise billable time
- ▶ Label all day with full-shift battery power
- ▶ Confidently transport between jobs with its durable construction

Key applications:

- ▶ New equipment commissioning
- ▶ Control panel installation
- ▶ Arc flash
- ▶ Pipe marking



ORIGINAL EQUIPMENT MANUFACTURERS (OEM)

Seamlessly move between work cells and eliminate rework

- ▶ Easily integrate with existing software
- ▶ Reduce rework caused by incorrect or damaged labels
- ▶ Streamline production by creating component IDs right on the assembly line

Key applications:

- ▶ Wires
- ▶ Control panel installation
- ▶ Server racks
- ▶ Inventory management (VMI)



LABORATORY TECHNICIANS

Increase workflow speed while protecting data accuracy

- ▶ Eliminate setup time with LabelSense automatic material calibration
- ▶ Improve traceability with accurate, scannable identification
- ▶ Print durable labels that withstand chemicals and harsh environments

Key applications:

- ▶ Test tubes and vials
- ▶ Slides
- ▶ Microplates
- ▶ Safety signs and labels

REDEFINING WHAT'S POSSIBLE

Meet the industrial label printer that won't hold you back

Durable Design

Withstands the general wear and tear of industrial environments and transportation

Fully Connected

Connect seamlessly via Wi-Fi, Bluetooth BLE, USB-C, USB-A and Ethernet - or work directly onboard with Fill and Print templates

Folding Carrying Handle

Folds out for transportation and back in during operation



Up to 101.6 mm Wide Labels

Delivers more labelling possibilities

Big 7" mm Colour Touchscreen

Colour, icons and clear instructions make navigation fast and intuitive

300 dpi

Prints deep, rich icons, graphics and small text



Removable Battery

Don't miss a minute of work - charge one while the other is in use (spare battery sold separately)



LabelSense™ Technology

Automates material detection and setup for effortless loading and calibration



Fast Charging

Battery goes from 0% to 100% charged in only 3.5 hours and lasts a full shift



Ergonomic Handle

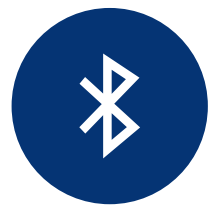
Carry with confidence
Balanced, comfortable grip makes transportation effortless

ALWAYS CONNECTED. Never tied down.

You shouldn't have to choose between a powerful printer and a connected workflow. With the i4311, you get a full suite of options for seamless data transfer and label creation. It's a smarter, more flexible way to work with none of the compromise.



Connect to your data the way the job demands



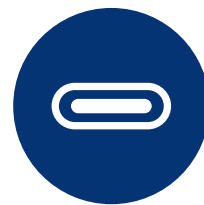
BLUETOOTH



WI-FI



ETHERNET



USB-C

Onboard templates. On-site freedom.

Work directly on the printer with **Fill and Print** templates

- ▶ Perfect for use in areas without Wi-Fi or to streamline jobsite trips
- ▶ Instantly access templates on the printer's large colour display
- ▶ Fill in information and print labels right on the spot



Label creation made easy with included Express Labels app and Brady Workstation software

- ▶ 20+ barcode types
- ▶ 85+ fonts
- ▶ 1,400+ symbols
- ▶ Microsoft Excel data imports
- ▶ Label sequencing
- ▶ Label saving and sharing
- ▶ Accurate print preview
- ▶ Safety graphics
- ▶ Regulatory templates
- ▶ Voice to Text
- ▶ Image to Text
- ▶ Premade label layouts



Scan to download the Express Labels app or visit BradyID.com/Software.

Modernised integrations to fit your workflows



- ▶ SOFTWARE DEVELOPMENT KIT (SDK)
- ▶ ZPL EMULATION*
- ▶ WINDOWS® DRIVER SUPPORT

* ZPL is a registered trademark of Zebra Technologies Corporation. Brady is not affiliated, associated, authorised, endorsed by, or in any way officially connected with Zebra Technologies Corporation

Possibilities powered by **LABELSENSE**

Automatic setup. Eliminated frustration.

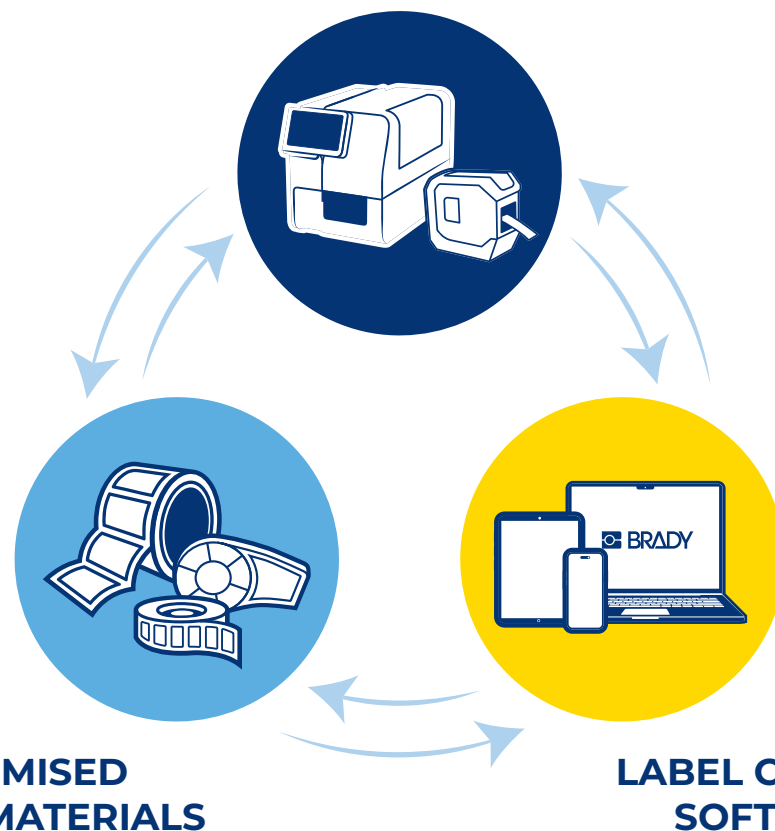
Welcome to a printing experience you never thought was possible, powered by Brady's exclusive LabelSense™ technology. Our bi-directional communication system enables the printer, materials and Brady software to "talk" to each other to power many innovative, enhanced and automatic features you only get from Brady. Save time. Eliminate tasks. Reduce waste. You've never seen anything like this before.



INNOVATIVE PRINTING PERFORMANCE

Smart functionality meets mechanical cleverness

Designed to deliver easy, fast, no-waste printing and eliminate confusing, time-consuming tasks.



OPTIMISED BRADY MATERIALS

For a faster, easier labelling experience
LabelSense materials remove all the guesswork, ensuring premium print quality on the first label, on the first try.

LABEL CREATION SOFTWARE

A seamless path to print from any source
Optimised for use with Brady Workstation and Express Labels Mobile, and easily integrates with third-party software.



Print on the first label in no time, every time

Intelligent features eliminate errors, waste and delay

▶ Accurate, Fast Setup

Switch between materials in under 20 seconds. Just drop in the roll, and LabelSense takes care of the rest.

▶ Ready Right Away

Eliminate wasted labels - the i4311 is ready to print the label you need, correctly, the very first time.

▶ Automatic Material Recognition

The i4311 knows what you drop in, immediately displaying the material type and size for accurate printing.

▶ Constant Calibration

Printer settings automatically calibrate to the material to ensure optimised durability and legibility.

PACK THE POWER.

Forget the cords.

Get exceptional printing performance wherever the job takes you



i4311 Models and Software Options

Get the job done right with the i4311

- ▶ Quickly change over materials in under 20 seconds
- ▶ Print on the first label - no calibration required
- ▶ Durable construction for industrial environments
- ▶ Prints on a wide variety of labels up to 101.6 mm wide
- ▶ Labels for almost any application
- ▶ All-day battery lasts a full shift



Maximise your i4311 printing experience using Brady Workstation label creation software and the Express Labels app.

Printer ships with Brady Workstation label creation software, Li-ion battery pack, AC adapter kit with USB-C cable, cleaning kit, mounting bracket and Quick Start Guide.

Art. No.	Order Reference	Description
178923	I4311-EMEA-APAC	i4311 Industrial Label Printer with Portability
178922	I4311-WB-EMEA-APAC	i4311 Industrial Label Printer with Portability, Wi-Fi / BT
325202	I4311-WB-EMEA-BWS	i4311 Industrial Label Printer with Portability, Wi-Fi / BT + BWS*
325203	I4311-EMEA-BWS	i4311 Industrial Label Printer with Portability + BWS*

The i4311 printer ships in a carton box and contains a Li-Ion Battery Pack, an AC Adapter Kit, a USB-C Cord, A Quick Start Guide, a Cleaning Kit, a Mounting bracket and a Brady Workstation Essentials version.

* Configurations with 'BWS' in the order reference include the extended Brady Workstation Pro license. Scan the QR code for more information on Brady Workstation!



Professional Grade. Premium Experience.

Add a multicolour printer with shape cutter

S3700 Industrial Label Printer

Pair the S3700 with the i4311 to cover every labelling need. The S3700 provides bold multicolour and precision shape cutting for comprehensive visual workplace safety. Empower every user to create vivid, custom signs, labels and tags from a centralised location.

BUNDLE AND SAVE WITH KITS

Bundle your i4311 with an industrial barcode reader, and enjoy savings compared to purchasing items separately.

i4311 Printer Kits

Art. No.	Order Reference	Description
325204	I4311-WB-V2200-BWS	i4311 Industrial Label Printer, Wi-Fi / BT + BWS* and V2200 Barcode Reader kit
325205	I4311-V2200-BWS	i4311 Industrial Label Printer + BWS* and V2200 Barcode Reader kit

The i4311 printer ships in a carton box and contains a Li-Ion Battery Pack, an AC Adapter Kit, a USB-C Cord, A Quick Start Guide, a Cleaning Kit, a Mounting bracket, a Brady Workstation Design & Print Pro version and a V2200 Barcode Reader.

* Configurations with 'BWS' in the order reference include the extended Brady Workstation Pro license. Scan the QR code for more information on Brady Workstation!



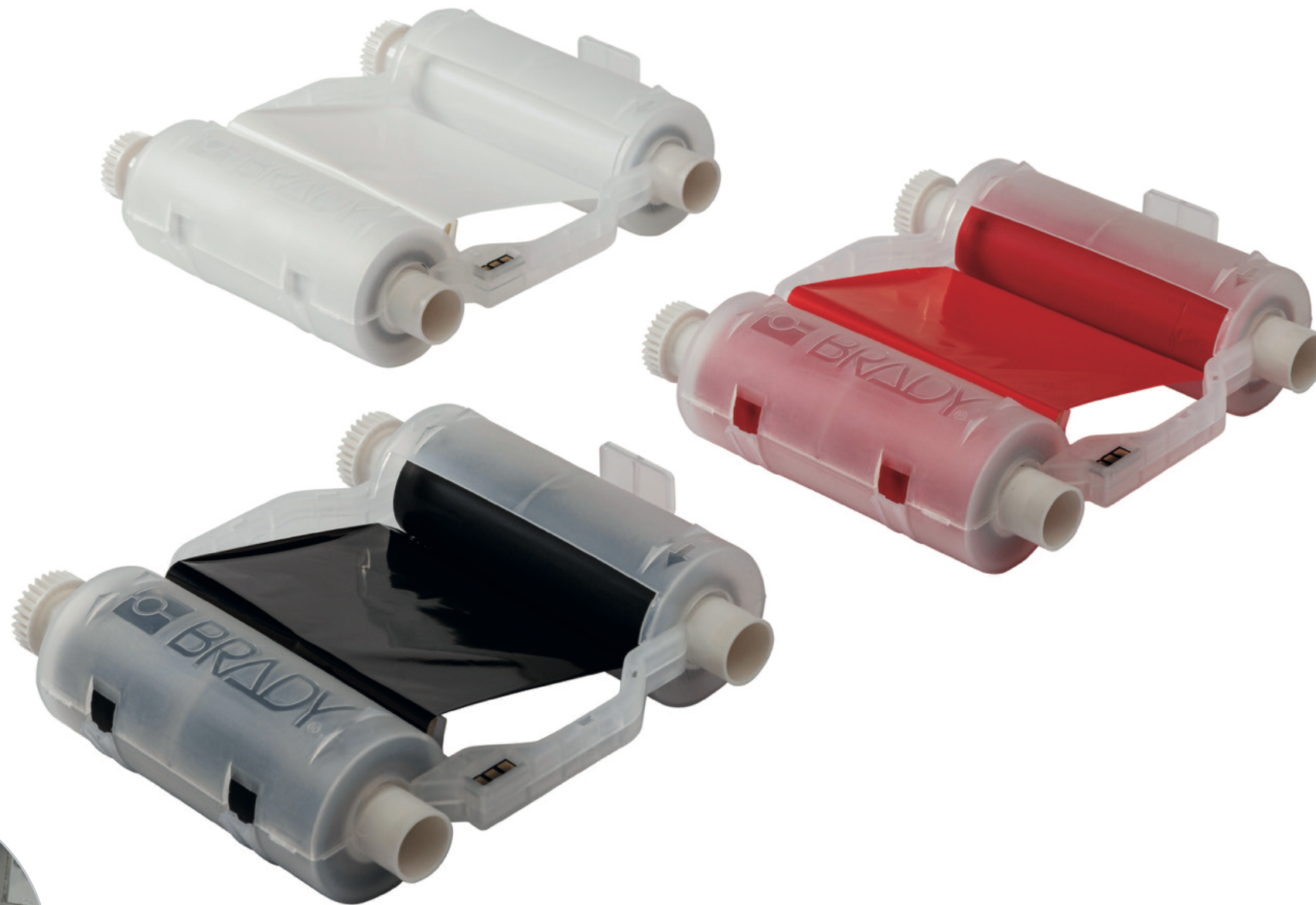
V2200



PRINT RIBBONS

No threading. No waste. No hassle.

Say goodbye to trial and error. Brady smear-proof ribbons can't be inserted incorrectly. And LabelSense technology finishes the job for you with automatic setup and calibration for the easiest ribbon loading, operation and application available.



Prints that won't quit

Rely on Brady's specialised print ribbons with proprietary resin for prints that are tough, smear-proof and highly solvent-resistant.



5-second ribbon installation

- ▶ Self-contained cartridges drop straight into printer with a "click"
- ▶ No calibrating, no threading, no wasted feeding, no hassles and the ink will always be facing the right direction
- ▶ Printer notifies user if installed ribbon is not recommended for installed labels
- ▶ Tough, smear-proof ribbons withstand years in industrial areas and outdoor conditions

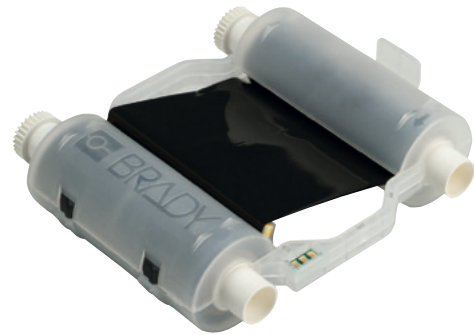
Colours and durability for every application

Order Reference	Colour	Width A (mm) x Length B (m)
B30-R10000	Black	110.00 mm x 60.00 m
B30-R4300	Black	110.00 mm x 60.00 m
B30-R6000HF	Black	110.00 mm x 60.00 m
B30-R6200	Black	110.00 mm x 60.00 m
B30-R6300	Black	109.98 mm x 60.96 m
B30-R6600	Black	110.00 mm x 60.00 m
B30-R10000-WT	White	110.00 mm x 60.00 m
B30-R4400-WT	White	110.00 mm x 60.00 m
B30-R6700-WT	White	110.00 mm x 60.00 m
B30-R10000-RD***	Red	110.00 mm x 60.00 m
B30-R10000-GN***	Green	110.00 mm x 60.00 m
B30-R10000-BL***	Blue	110.00 mm x 60.00 m
B30-R10000-YL*/***	Yellow	110.00 mm x 60.00 m
B30-R10000-OR***	Orange	110.00 mm x 60.00 m
B30-R10000-MA***	Magenta	110.00 mm x 60.00 m

* B30-R10000-YL for printing yellow onto white.

*** Coloured ribbons optimised for use on white material. Test use on other material colours for suitability to your application.

Print ribbon & label material compatibility



To ensure the best legend permanence, all ribbons have been developed to meet the requirements of the materials to be printed on. Use the guide below to determine which ribbon series is recommended with your print materials.

- Recommended ribbon for use with respective material.
- ▲ Acceptable ribbon for use with respective material.
- UL Materials are UL recognized with its respective ribbon.
- CSA Materials are CSA approved with its respective ribbon.
- cU Materials are cUL recognised with its respective ribbon.

Material	Colour	B30-R4300	B30-R4900	B30-R6000	B30-R6200	B30-R6300	B30-R6400	B30-R6600	B30-R10000	B30-R4400-WT	B30-R6700-WT*	B30-R6800-WT***	B30-R10000-WT	B30-R10000-YL**	B30-R10000****
		B-342	Heat-shrink Polyolefin	●						●					
B-342 BLK	Heat-shrink Polyolefin								●						
B-345	High Temperature Heat-shrink Polyvinylidene Fluoride			▲				●							
B-403	Paper	●													
B-413	Metallic, Non-metal Polyester			●UL											
B-414	Polyester			●	●										
B-417	Self-laminating Vinyl	●UL													
B-422	Polyester			●UL/CSA	●										
B-423	Polyester			●UL/CSA	▲										
B-424	Paper	●													
B-427	Self-laminating Vinyl	●UL													
B-428	Metallised Polyester	●UL/CSA													
B-430	Polyester			●UL/CSA											
B-432	Polyester		▲	●UL/CSA											
B-434A	Metallised Polyester			●UL/CSA											
B-435A	Metallised Polyester			●UL/CSA											
B-437	Polyvinylfluoride	●			●										
B-437 YEL	Polyvinylfluoride	●			●										
B-438	Tamper-evident Metallised Polyester	●UL/CSA													
B-439	Vinyl			●	●										
B-439	Vinyl			●											
B-461	Self-laminating Polyester	●			▲										
B-472	Polyimide	●			●										
B-481	StainerBondz™ Polyester						●								
B-483A/B-634	Polyester with Polyester Overlamine			●					●						
B-484A	Polyester			●UL											
B-486B	Metallised Polyester	●UL/CSA													
B-489A	Polyester	●UL/CSA													
B-490	FreezerBondz™ Polyester	●					▲								
B-492	FreezerBondz™ Polyester				●										
B-494	Polyester						●								

For further material compatibility related to UL/CSA, see pages 21-26 or refer to Brady Tech Data Sheet for complete material performance specifications.

Print ribbon & label material compatibility

(Continued)

- Recommended ribbon for use with respective material.
- ▲ Acceptable ribbon for use with respective material.
- UL Materials are UL recognized with its respective ribbon.
- CSA Materials are CSA approved with its respective ribbon.
- cU Materials are cUL recognised with its respective ribbon.

Material	Colour	B30-R4300	B30-R4900	B30-R6000	B30-R6200	B30-R6300	B30-R6400	B30-R6600	B30-R10000	B30-R4400-WT	B30-R6700-WT*	B30-R6800-WT***	B30-R10000-WT	B30-R10000-YL**	B30-R10000****
		B-498	Vinyl Cloth	▲UL			●UL								
B-499	Nylon Cloth	▲UL/CSA		●UL											
B-509	Magnetic Polyester			●				●							●
B-526	Phosphorescent Polyester			●				●							●
B-549	Polyester			●				●							●
B-569	Polyester			●				●				●			●
B-581	Vinyl			●				●							●
B-584	Reflective Tape			●				●							●
B-593	Polyester			●				●							
B-595	Vinyl			●				●							
B-618	Polyester		●UL	●UL											
B-711	Polyester			●											
B-712	Polyester			●											
B-718	Polyimide			●UL											
B-719	Polyimide			●UL											
B-724	Polyimide	●													
B-728	Polyimide			●UL											
B-729	Polyimide			●UL											
B-7425	Polypropylene	▲					●								
B-7569	Vinyl			●				●							
B-7641	Heat-shrink Polyolefin			●				●							
B-7642	Heat-shrink Polyolefin	●					●								
B-7643	Thermoplastic Polyether Polyurethane			●											
B-767	Static Dissipative Polyimide			●UL											
B-777	Polyimide				●UL/CSA										
B-797	Polyimide			●UL											
B-851	Polyester			●				●							●
B-854	Metal Detectable Polyester			●											
B-855	Polyester			●											
B-8591	Polymer			●UL				●UL							
B-8591 BLK	Polymer								●UL						
B-8591 SLV	Polymer							●UL		●					

For further material compatibility related to UL/CSA, see pages 21-26 or refer to Brady Tech Data Sheet for complete material performance specifications.

LABEL MATERIALS

Print with confidence on labels made for the job



Arc Flash



Panel and Enclosure ID



Equipment and LOTO Tags



GHS and Chemical



Lean/5S



Safety Signs



Pipe Markers



Wire Markers



Circuit Board Labels



Barcode Labels



Inventory Management



Laboratory Labels

Materials for every application

The best results start with the right materials. Brady ensures purpose-built performance and durability.

Brady Material No.	Material	Finish	Colour	Temp (°C) (Tested for 30 days)		Properties & Applications	Approval/Compliance
				Min.	Max.		
B-342	Heat-shrink Polyolefin	Matt	White	-55 °C	130.6 °C	3:1 ratio heat shrinkable wire marking sleeve that fits snugly around wires for identification and protection. Fade-resistant and flame retardant. Also available in yellow and black.	UL Recognised to UL224, SAE-AMS-DTL-23053/5 C (Class 1), SAE AS-81531
B-345	High Temperature Heat-shrink Polyvinylidene Fluoride	Matt	White	-70 °C	130.6 °C	2:1 ratio heat shrinkable wire marking sleeve specifically designed for high temperature and low vacuum outgassing applications. These heat shrinkable wire marking sleeves are made from irradiated high temperature PVDF. Also available in black.	NASA SP-R-0022A Outgassing Performance, SAE-AMS-DTL-23053/18 (Class 2), SAE AS-81531, MIL-STD-202G Method 215K
B-348	Polyolefin	Matt	White	-55 °C	105 °C	Brady's B-348 High Performance material complies with the minimal smoke and halogen emission requirements of the most stringent underground standards for high-performance vehicles. The material is printable on-site and in the field, making it a practical solution for identifying thick cables and cable bundles. B-348 has proven to be highly durable, exhibiting excellent UV resistance. Available in white and yellow colours.	EN-45545-2, requirement 24, Vehicle Category HL3
B-403	Paper	Matt	Black on White	-70 °C	100 °C	White dissolvable paper. Dissolves completely in water leaving no adhesive residue, ideal for temporary labelling applications	-
B-413	Metallic, Non-metal Polyester	Satin	Light Grey	-70 °C	110 °C	Thermal transfer printable polyester material with metallic-looking finish (non-metallised). Ideal for barcoded asset tracking and rating plate applications.	UL Recognised, cUL Recognised
B-417	Self-laminating Vinyl	Matt	White	-40 °C	70 °C	Keep your wire identification secure with this self-laminating marker with extra-strong adhesive. The extra-strong adhesive makes these markers ideal for small-diameter wires. Features a white printable area and a clear tail that wraps around the marker.	UL Recognised to UL969 Labelling and Marking Standard when printed with the Brady Series R4300 and R7950 ribbons. See UL files MH62024 for specific details. Brady customers should specify at purchase if they require UL Recognised B-417 labels. Brady sells both UL Recognised B-417 labels and non-approved labels depending on customer requirements
B-422	Polyester	Gloss	White	-40 °C	100 °C	White material stock with glossy finish and 2 mils of adhesive for rough surface applications, including low surface energy plastics. Designed to withstand solvent exposure. UL rated for surfaces commonly used in solar panel manufacturing. Also used for component identification, barcoding, asset and inventory tracking.	UL Recognised, CSA Accepted
B-423	Polyester	Gloss	White	-70 °C	110 °C	White polyester thermal transfer printable material with a glossy finish. Widely used for component identification, barcoding, asset and inventory tracking. UL rated for surfaces commonly used in solar panel manufacturing.	UL Recognised, CSA Accepted, Halogen Free (DIN VDE 0472/part 815) Approvals are for White material only
B-424	Paper	Matt	White	-40 °C	50 °C	White paper material with matt finish and smooth top coat finish for thermal transfer printing. Good contrast and smear resistance for thermal barcode printing. Used for general purpose labelling applications	-
B-425A	Polypropylene	Matt	White	-70 °C	80 °C	White polypropylene material stock with matt finish for thermal transfer printing or write-on applications. Excellent solvent resistance and print performance; not recommended for long-term outdoor use.	UL Recognised, CSA Accepted, Halogen Free (DIN VDE 0472/part 815)

For further ribbon compatibility related to UL / CSA, see pages 18-19 and refer to Brady Tech Data Sheet for complete material performance specifications.



Brady Material No.	Material	Finish	Colour	Temp (°C) (Tested for 30 days)		Properties & Applications	Approval/Compliance
				Min.	Max.		
B-427	Self-laminating Vinyl	Matt	White	-40 °C	60 °C	Thermal transfer printable, self-laminating material. These labels have a printable area with a clear "tail" that wraps around the marker. The "tail" serves as overlaminate to protect the print. Superior resistance to abrasion, solvents, water, oil and dirt. Also available in grey, brown, green, yellow, blue, red, purple, orange.	UL Recognised to UL969 Labelling and Marking Standard when printed with the Brady Series R4300 and R6200 ribbons. See UL files MH17154 for specific details. Brady customers should specify at purchase if they require UL Recognised B-427 labels. Brady sells both UL Recognised B-427 labels and non-approved labels depending on customer requirements.
B-428	Metallised Polyester	Matt	Light Grey	-70 °C	120 °C	Thermal transfer printable metallised polyester with matt finish. Withstands solvents and variable temperatures. Excellent for serial and rating plate applications with name-plate quality and a metal-looking finish.	UL Recognised, CSA Accepted, AGA Approved, Halogen Free (DIN VDE 0472/part 815)
B-428/B-966B	Metallised Polyester with Polyester Overlaminate	Gloss	Light Grey	-70 °C	120 °C	A Metallised polyester label that comes with a separate overlaminate to be applied over the label once printed. This way the label remains clear and easy-to-read, even in harsh environments. Overlaminate is a clear polyester (B-966B) that extends outside of label on each side when applied.	—
B-430	Polyester	Gloss	Transparent	-70 °C	100 °C	Translucent, high performance polyester material with a glossy finish. Thermal transfer printable.	UL Recognised, CSA Accepted
B-432	Polyester	Gloss	Transparent	-40 °C	100 °C	Translucent, high performance polyester material with a glossy finish. Thermal transfer printable. Very similar to B-430, but has a thicker layer of acrylic adhesive for better adherence to rough surface applications.	UL Recognised, CSA Accepted
B-434A	Metallised Polyester	Gloss	Silver	-40 °C	90 °C	Metallised polyester with a glossy finish and a thicker layer of adhesive for better adherence to rough surface applications. Withstands numerous solvents while maintaining excellent image quality.	UL Recognised, CSA Accepted
B-435A	Metallised Polyester	Gloss	Silver	-40 °C	90 °C	Printable metallised polyester withstands numerous solvents and variable temperatures. Ideal for serial and rating plate applications with name-plate quality and a metal looking finish.	UL Recognised, CSA Accepted
B-437	Polyvinylfluoride	Matt	White	-70 °C	135 °C	Polyvinylfluoride label material with matt finish. Used in wire and cable identification applications where self-extinguishing features are required. This label material utilises an adhesive for heavy-duty applications and is available in continuous or die-cut formats. Excellent resistance to water, oil and other common fluids. Also available in yellow.	ML-M-87958 Pressure Sensitive Adhesive Wire or Cable Marker and Identification specification
B-438	Tamper-evident Metallised Polyester	Matt	Silver	-40 °C	40 °C	Metallised polyester material with matt finish. Leaves a checkerboard footprint on the surface when removed; the pattern also appears on the top of the label to prevent it from being reused.	UL Recognised, CSA Accepted
B-439	Vinyl	Gloss	Green	-70 °C	40 °C	Available in Blue, Green, Orange, Red, White and Yellow	—
B-461	Self-laminating Polyester	Matt	White, Transparent	-196 °C	110 °C	Permanent adhesive; suitable for liquid nitrogen application if material is wrapped around itself, as in self-lamination; write-on capabilities. Temperature range increases to 121 °C when used in autoclave process	—
B-472	Polyimide	Matt	White	-70 °C	100 °C	Cable and wire bundle applications and label applications where self-extinguishing properties are required	—
B-480A	Metallic, Non-metal Polyester	Satin	Silver	-70 °C	110 °C	Thermal transfer printable polyester material with metallic-looking finish (non-metallised) and aggressive adhesive for powder coats or rough surface applications. Ideal for barcoded asset tracking and rating plate applications.	UL Recognised, cUL Recognised
B-481	StainerBondz™ Polyester	Matt	White	-80 °C	130 °C	White polyester will remain resistant when exposed to xylene and other chemicals that are commonly used in the slide staining process	—

For further ribbon compatibility related to UL / CSA, see pages 18-19 and refer to Brady Tech Data Sheet for complete material performance specifications. >>

Brady Material No.	Material	Finish	Colour	Temp (°C) (Tested for 30 days)		Properties & Applications	Approval/Compliance
				Min.	Max.		
B-483A	Polyester	Gloss	White	-40 °C	120 °C	White polyester thermal transfer printable material with glossy finish and aggressive adhesive specifically designed for powder coated surfaces.	UL Recognised, CSA Accepted
B-484A	Polyester	Gloss	White	-40 °C	120 °C	White polyester thermal transfer printable material, similar to B-483, but with thinner construction for curved or angled surfaces. Offers aggressive adhesive for adhesion to textured metals and low surface energy plastics.	UL Recognised
B-486B	Metallised Polyester	Matt	Light Grey	-40 °C	120 °C	Thermal transfer printable metallised polyester material. Designed for high adhesion to textured metals, powder coated surfaces and low surface energy plastics.	UL Recognised, CSA Accepted
B-488	Polyester	Matt	White	-40 °C	145 °C	White polyester thermal transfer printable material, similar to B-423, but with matt finish. Widely used for component identification, barcoding, asset and inventory tracking.	—
B-489A	Polyester	Matt	White	-40 °C	120 °C	White polyester thermal transfer printable material, similar to B-483, but with matt finish. Aggressive adhesive specifically designed for powder coated surfaces.	UL Recognised, CSA Accepted
B-490	FreezerBondz™ Polyester	Matt	White	-196 °C	130 °C	Can be applied to frozen surfaces including glass and polypropylene stored in liquid nitrogen, except for Vial Tops. Material must slightly overlap itself.	—
B-492	FreezerBondz™ Polyester	Matt	White	-196 °C	110 °C	Ultra thin; can label frosted/frozen (with overlap) or room temperature labels and lasts in liquid nitrogen and hot water baths	—
B-498	Vinyl Cloth	Semi-gloss	White	-40 °C	80 °C	White vinyl cloth label material with glossy finish. The adhesive and cloth backing give excellent holding power, while being repositionable and removing cleanly.	UL Recognised
B-499	Nylon Cloth	Matt	Black on White	-40 °C	90 °C	Nylon cloth material with matt finish. The adhesive allows labelling in environments with heat, cold, oil and dirt. Also available in yellow.	UL Recognised, CSA Accepted, Halogen Free (DIN VDE 0472/part 815) Approvals are for White material only
B-509	Magnetic Polyester	Matt	White	-18 °C	70 °C	Magnetic Back Polyester is used for temporary, reusable and movable signs	—
B-526	Phosphorescent Polyester	Gloss	Photoluminescent Green	-40 °C	60 °C	BradyGlo™ High Intensity laminate is designed to provide high adhesion and luminance for egress marking in low light areas in and along stairwells of public buildings, exit and directional signs, identification of fire alarms and extinguishers, low location egress pathway markings, and directional systems for escape or evacuation routes.	New York Local Law 26 RS 6-1 & 6-1A, City of New York, Department of Buildings MEA No. 467-06-M UV: 46-9-7
B-549	Polyester	Gloss	White	-40 °C	100 °C	Flexible, dimensionally stable, low temperature, pressure sensitive adhesive tape for permanent application. Adhesive can be applied at temperatures down to -10°F (-23°C).	—
B-551	Polyester	Matt	White	-40 °C	89 °C	Tag material used for marking on-the-spot warning of dangerous conditions	Complies to OSHA 1910.145(f) when printed with required signal word and major message.
B-565	Metallised Polyester	Matt	Silver	-40 °C	110 °C	Designed for applications like identification labels or rating and serial plates that utilise barcodes, alphanumerics, graphic symbols and logos and require nameplate-like quality	—
B-569	Polyester	Gloss	Green	-40 °C	100 °C	Designed for use on stainless steel pipes in harsh environments such as the Pulp and Paper Industry	—
B-581	Vinyl	Gloss	White	-40 °C	82 °C	Only indoor use, where frequent repositioning is required	—
B-584	Reflective Tape	Gloss	Orange	-40 °C	70 °C	Suitable for outdoor use. Also available in silver and yellow.	—

For further ribbon compatibility related to UL / CSA, see pages 18-19 and refer to Brady Tech Data Sheet for complete material performance specifications. >>

Brady Material No.	Material	Finish	Colour	Temp (°C) (Tested for 30 days)		Properties & Applications	Approval/Compliance
				Min.	Max.		
B-593	Polyester	Gloss	White	-20 °C	100 °C	EPREP (Engraved Panel REplacement labels) are designed for patch panel identification in identifying external push-buttons, switches and internal connection points. Also available in black, green, red, silver and yellow.	UL Recognised, cUL Recognised
B-595	Vinyl	Gloss	White	-40 °C	82 °C	Durable, low-shrink vinyl with our most aggressive adhesive. Conforms to irregular, curved, rough and highly textured surfaces (painted cinder blocks, uneven wood, textured plastics, paper-jacketed pipes, powder-coated surfaces). Adheres to "difficult" low-surface energy items (PVC piping, blow-moulded equipment cases, ABS plastics, recycled plastics). Available in a wide range of colours.	BS 5609:1986 Section 2 and section 3
B-618	Polyester	Matt	White	-70 °C	120 °C	Ideal for rating plate applications and general-purpose labelling with high-quality barcodes and graphics. Film contains recycled PET.	UL Recognised, cUL Recognised
B-719	Polyimide	Matt	White	-70 °C	300 °C	White polyimide material with matt finish and ultra-durable adhesive. Used in printed circuit board and electronic component pre-process labelling. Designed for use with extreme wash protocol and cleaning chemicals. Surface resistivity values in the recommended range for dissipative ESD packing materials.	UL Recognised, ANSI/ESD S541-2008 (between 10 and 10 ohms) for dissipative ESD packaging materials, MIL-STD-202G Method 215K
B-724	Polyimide	Matt	Amber	-70 °C	300 °C	Amber polyimide material with matt finish and ultra-durable adhesive. Used in printed circuit board and electronic component pre-process labelling. Designed for use with extreme wash protocol and cleaning chemicals.	MIL-STD-202G, Notice 12, Method 215K, SAE AS81531 Marking of Electrical Insulating Material
B-728	Polyimide	Matt	White	-70 °C	300 °C	White polyimide material with matt finish and ultra-durable adhesive. Used in printed circuit board and electronic component pre-process labelling. Designed for use with extreme wash protocol and cleaning chemicals.	UL Recognised, MIL-STD-202G, Notice 12, Method 215K
B-729	Polyimide	Matt	White	-70 °C	300 °C	White polyimide material, low profile (1 mil thickness), with matt finish and ultra-durable adhesive. Used in printed circuit board and electronic component pre-process labelling. Designed for use with extreme wash protocol and cleaning chemicals.	UL Recognised, MIL-STD-202G, Notice 12, Method 215K
B-7425	Polypropylene	Matt	Black on White	-80 °C	70 °C	White Polypropylene material. Ideal for laboratory identification such as vials, centrifuge tubes and test tubes. For freezer or liquid nitrogen applications, B-7425 must be applied prior to being frozen.	-
B-7563	Metallised Polyester	Satin	Silver	-40 °C	135 °C	Thermal transfer printable metallised polyester withstands numerous solvents and variable temperatures. Ideal for serial and rating plate applications with name-plate quality and a metal looking finish.	UL Recognised
B-7569	Vinyl	Gloss	White	-20 °C	75 °C	Used for Pipe Markers, Arrow Tape, Warehouse Marking, Floor Marking, Warning Panels, Safety Signs and Hazardous Substance Identification. Available in a wide range of colours.	BS 5609:1986 Section 2 and section 3
B-7597	Polyethylene	Matt	White	-40 °C	100 °C	Polyethylene tag material. Resists tearing and the topcoat resists smudging and abrasion. Halogen free material.	Halogen Free (DIN VDE 0472/part 815)
B-7598	Polyester	Gloss	White, Yellow, Red, Green, Silver, Black, Blue	-40 °C	100 °C	A general identification polyester tag for cables exposed to extreme conditions. Up to 10 years outdoor durability. Also available in black, blue, green, red, silver and yellow.	Parts supplied in White, Black or Silver are Halogen Free as per IEC 61249-2-21 (2003-11)
B-7599	Polyethylene	Matt	Yellow	-40 °C	50 °C	White polyethylene tag material. Rapido™ Wiremarking Sleeves are fast and easy to apply. Simply squeeze the edges of the material together, thread your wire through the holes and pull away the wire to release the marker.	-

For further ribbon compatibility related to UL / CSA, see pages 18-19 and refer to Brady Tech Data Sheet for complete material performance specifications. >>

Brady Material No.	Material	Finish	Colour	Temp (°C) (Tested for 30 days)		Properties & Applications	Approval/Compliance
				Min.	Max.		
B-7641	Heat-shrink Polyolefin	Matt	White	-55 °C	105 °C	2:1 ratio heat shrinkable, zero halogen wire marking sleeves. The wire marking sleeves offer outstanding fire safety properties and minimal smoke emission. Also available in yellow.	BS-6853 (1999) Vehicle Category 1A; EN-45545-2, requirement 24, Vehicle Category HL3, Zero Halogen
B-7642	Heat-shrink Polyolefin	Matt	White	-40 °C	120 °C	2:1 ratio heat shrinkable wire marking sleeves. The sleeves are high-temperature rated, highly flame retardant, and very flexible.	-
B-7643	Thermoplastic Polyether Polyurethane	Matt	White, Yellow	-40 °C	90 °C	Thermal transfer and dot matrix printable wire and cable bundle tag for harsh environments. Low halogen material. Also available in black, orange, red and yellow.	Halogen requirements of IEC 61249-2-21 (2003-11)
B-767	Static Dissipative Polyimide	Gloss	White	-80 °C	300 °C	The high performance B-767 material is ideal for PCB and electronic component manufacturing, this material is static dissipative and survive extreme processes like wave soldering and multiple harsh washes.	UL Recognised, ANSI/ESD S541-2008 (between 10 and 10 ohms) for dissipative ESD packaging materials, MIL-STD-202G Method 215K
B-768	Static Dissipative Polyimide	Gloss	White	-80 °C	300 °C	The high performance ultra-thin B-768 material is ideal for PCB and electronic component manufacturing, this material is static dissipative and survive extreme processes like wave soldering and multiple harsh washes.	UL Recognised, ANSI/ESD S541-2008 (between 10 and 10 ohms) for dissipative ESD packaging materials, MIL-STD-202G Method 215K
B-777	Polyimide	Gloss	White	-70 °C	300 °C	The B-777 Ultratem label for harsh washing processes works seamlessly with the BSP™61 Print and Apply System, the ALF Label Feeder and other auto-apply systems. Together they provide a reliable and flexible on-site traceability solution for high heat applications in manufacturing.	UL Recognised to UL969 Labelling and Marking Standard when printed with Brady Series R6300 ribbon. See UL file MH25991 for specific details.
B-787	Polyvinylfluoride	Gloss	White	-70 °C	100 °C	White polyvinyl fluoride material. Used in wire and cable identification applications where self-extinguishing properties are required.	Boeing BMS 10-26 Type I, Grade A, Meets the colour requirements of FED-STD-595C Colour 17875 White
B-797	Polyimide	Gloss	White	-80 °C	300 °C	B-797 is a high performance material for PCB and electronic component manufacturing, that is engineered to survive extreme processes like wave soldering and multiple harsh washes.	UL Recognised, MIL-STD-202G, Notice 12, Method 215K, Dibutyltin and Dioctyltin free
B-8423	Polyester	Satin	White	-70 °C	110 °C	Polyester material with satin finish, economical alternative to B-423. Used for component identification, barcoding, asset and inventory tracking. Also available in yellow.	-
B-854	Metal Detectable Polyester	Matt	White	-40 °C	110 °C	Tough against harsh washdown environments; metal detectable. Also available in yellow.	-
B-855	Polyester	Matt	White	-40 °C	110 °C	Tough against harsh washdown environments. Also available in yellow.	-
B-8591	Polymer	Gloss	White	-70 °C	110 °C	B-8591 toughest outdoor label is suited for smooth, textured/rough or highly textured/low energy surfaces.	-

PRODUCT AND GENERAL PURPOSE IDENTIFICATION

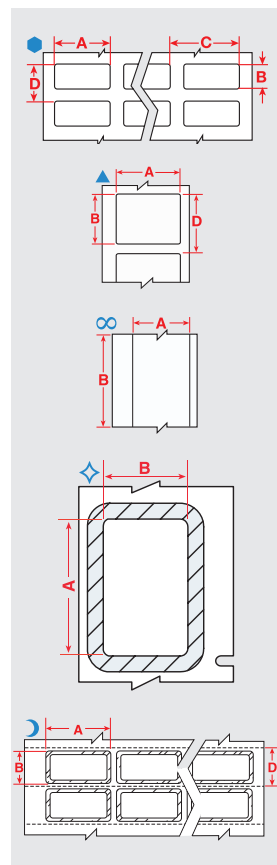


Polyester labels

For general purpose industrial identification applications

- ▶ Widely used for PC board component identification, bin and shelf labels, barcoding and asset tracking
- ▶ 3 levels of adhesive strength

Diagram	Order Reference	Colour	Label Width A (mm)	Label Height B (mm)	Label Length B (m)	Vertical Repeat D (mm)	Labels per Roll	Printer Ribbon Series
B-422: Polyester								
●	B33-149-422	White	12.70	12.70	-	15.24	5000	B30-R6000
●	B33-5-422	White	25.40	12.70	-	15.24	5000	B30-R6000
▲	B33-102-422	White	38.10	9.40	-	12.70	2500	B30-R6000
●	B33-147-422	White	38.10	9.53	-	12.70	2500	B30-R6000
▲	B33-136-422	White	38.10	19.05	-	22.23	1500	B30-R6000
▲	B33-17-422	White	50.80	25.40	-	28.58	1500	B30-R6000
▲	B33-18-422	White	76.20	25.40	-	28.58	1500	B30-R6000
▲	B33-19-422	White	76.20	50.80	-	53.98	500	B30-R6000
▲	B33-76-422	White	101.60	76.20	-	79.38	500	B30-R6000
∞	B33C-312-422	White	7.92	-	25.91	-	1	B30-R6000
∞	B33C-375-422	White	9.53	-	25.91	-	1	B30-R6000
B-423: Polyester								
●	B33-11-423	White	6.35	6.35	-	9.53	15000	B30-R6000
●	B33-340-423	White	9.53	9.53	-	12.07	10000	B30-R6000
●	B33-149-423	White	12.70	12.70	-	15.24	5000	B30-R6000
●	B33-343-423	White	12.70	5.08	-	8.26	10000	B30-R6000
●	B33-1-423	White	19.05	6.35	-	8.89	5000	B30-R6000
▲	B33-46-423	White	19.05	6.35	-	8.89	5000	B30-R6000
▲	B33-49-423	White	22.86	6.35	-	8.89	5000	B30-R6000
▲	B33-103-423	White	25.40	6.35	-	8.89	5000	B30-R6000
●	B33-3-423	White	25.40	9.53	-	12.07	5000	B30-R6000
●	B33-5-423	White	25.40	12.70	-	15.24	5000	B30-R6000
●	B33-29-423	White	31.75	9.53	-	12.07	5000	B30-R6000
▲	B33-43-423	White	31.75	6.35	-	8.89	5000	B30-R6000
▲	B33-45-423	White	38.10	6.35	-	8.89	5000	B30-R6000
▲	B33-72-423	White	44.45	6.35	-	8.89	5000	B30-R6000
▲	B33-53-423	White	50.80	12.70	-	15.24	2500	B30-R6000
▲	B33-17-423	White	50.80	25.40	-	28.58	1500	B30-R6000
▲	B33-7-423	White	69.85	31.75	-	34.93	1000	B30-R6000
▲	B33-19-423	White	76.20	50.80	-	53.98	500	B30-R6000
▲	B33-18-423	White	76.20	25.40	-	28.58	1500	B30-R6000
▲	B33-20-423	White	76.20	127.00	-	130.18	350	B30-R6000
▲	B33-55-423	White	101.60	50.80	-	53.98	750	B30-R6000
▲	B33-76-423	White	101.60	76.20	-	79.38	500	B30-R6000
▲	B33-161-423	White	101.60	101.60	-	104.78	450	B30-R6000
▲	B33-25-423	White	101.60	152.40	-	155.58	300	B30-R6000
∞	B30C-2000-423	White	50.80	-	30.48	-	1	B30-R6000
∞	B30C-3000-423	White	76.20	-	30.48	-	1	B30-R6000
∞	B30C-4000-423	White	101.60	-	45.72	-	1	B30-R6000
B-423/B-966B: Polyester with Polyester Overlamine								
◐	B33-22-423	White	31.75	19.05	-	28.58	2000	B30-R6000
◇	B33-23-423	White	50.80	25.40	-	34.93	800	B30-R6000
◇	B33-24-423	White	69.85	44.45	-	53.98	500	B30-R6000



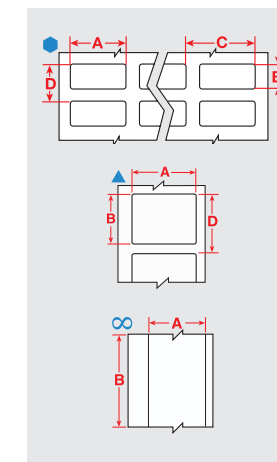
PRODUCT AND GENERAL PURPOSE IDENTIFICATION

Polyester labels (continued)

For general purpose industrial identification applications



Diagram	Order Reference	Colour	Label Width A (mm)	Label Height B (mm)	Label Length B (m)	Vertical Repeat D (mm)	Labels per Roll	Printer Ribbon Series
B-430: Polyester								
●	B33-5-430	Transparent	25.40	12.70	-	15.24	5000	B30-R6000
▲	B33-17-430	Transparent	50.80	25.40	-	28.58	1500	B30-R6000
▲	B33-18-430	Transparent	76.20	25.40	-	28.58	1500	B30-R6000
∞	B33C-3000-430	Transparent	76.20	-	30.48	-	1	B30-R6000
B-432: Polyester								
●	B33-149-432	Transparent	12.70	12.70	-	15.24	5000	B30-R6000
▲	B33-17-432	Transparent	50.80	25.40	-	28.58	1500	B30-R6000
▲	B33-18-432	Transparent	76.20	25.40	-	28.58	1500	B30-R6000
▲	B33-19-432	Transparent	76.20	50.80	-	53.98	500	B30-R6000
∞	B30C-4000-432	Transparent	101.60	-	36.58	-	1	B30-R6000
B-483A: Polyester								
●	B33-149-483	White	12.70	12.70	-	15.24	5000	B30-R6000
●	B33-5-483	White	25.40	12.70	-	15.24	5000	B30-R6000
▲	B33-17-483	White	50.80	25.40	-	28.58	1500	B30-R6000
▲	B33-7-483	White	69.85	31.75	-	34.93	1000	B30-R6000
▲	B33-19-483	White	76.20	50.80	-	53.98	500	B30-R6000
▲	B33-18-483	White	76.20	25.40	-	28.58	1500	B30-R6000
▲	B33-55-483	White	101.60	50.80	-	53.98	750	B30-R6000
▲	B33-76-483	White	101.60	76.20	-	79.38	500	B30-R6000
∞	B30C-4000-483	White	101.60	-	39.62	-	1	B30-R6000
B-484A: Polyester								
▲	B33-125-484	White	22.86	12.70	-	15.24	1500	B30-R6000
●	B33-5-484	White	25.40	12.70	-	15.24	5000	B30-R6000
▲	B33-136-484	White	38.10	19.05	-	22.23	1500	B30-R6000
▲	B33-17-484	White	50.80	25.40	-	28.58	1500	B30-R6000
▲	B33-18-484	White	76.20	25.40	-	28.58	1500	B30-R6000
▲	B33-19-484	White	76.20	50.80	-	53.98	500	B30-R6000
▲	B33-55-484	White	101.60	50.80	-	53.98	750	B30-R6000
▲	B33-161-484	White	101.60	101.60	-	104.78	350	B30-R6000
∞	B30C-4000-484	White	101.60	-	45.72	-	1	B30-R6000
B-488: Polyester								
∞	B30C-4000-488	White	101.60	-	39.62	-	1	B30-R4300
B-489A: Polyester								
●	B33-5-489	White	25.40	12.70	-	15.24	5000	B30-R4300
▲	B33-17-489	White	50.80	25.40	-	28.58	1500	B30-R4300
▲	B33-19-489	White	76.20	50.80	-	53.98	500	B30-R4300
▲	B33-18-489	White	76.20	25.40	-	28.58	1500	B30-R4300
∞	B30C-4000-489	White	101.60	-	39.62	-	1	B30-R4300



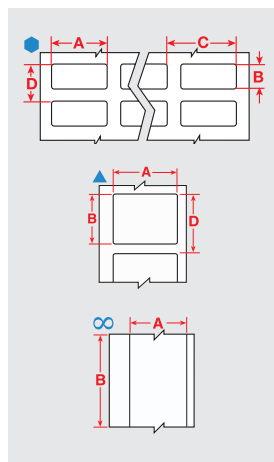
PRODUCT AND GENERAL PURPOSE IDENTIFICATION



Polyester labels (continued)

For general purpose industrial identification applications

Diagram	Order Reference	Colour	Label Width A (mm)	Label Height B (mm)	Label Length B (m)	Vertical Repeat D (mm)	Labels per Roll	Printer Ribbon Series
B-618: Polyester								
●	B33-12-618	White	12.70	11.10	-	13.67	10000	B30-R6000
●	B33-5-618	White	25.40	12.70	-	15.24	7000	B30-R6000
●	B33-37-618	White	38.10	12.70	-	15.24	5000	B30-R6000
●	B33-6-618	White	38.10	19.05	-	22.23	3300	B30-R6000
▲	B33-53-618	White	50.80	12.70	-	15.24	2500	B30-R6000
▲	B33-17-618	White	50.80	25.40	-	28.58	1500	B30-R6000
▲	B33-7-618	White	69.85	31.75	-	34.93	1000	B30-R6000
▲	B33-18-618	White	76.20	25.40	-	28.58	1500	B30-R6000
▲	B33-19-618	White	76.20	50.80	-	53.98	700	B30-R6000
▲	B33-55-618	White	101.60	50.80	-	53.98	750	B30-R6000
▲	B33-76-618	White	101.60	76.20	-	79.38	500	B30-R6000
B-8423: Polyester								
●	B33-12-8423	White	12.70	11.10	-	14.13	2500	B30-R6000
●	B33-101-8423	White	19.05	6.35	-	9.40	2500	B30-R6000
●	B33-G2-8423YL	Yellow	20.00	7.95	-	15.00	5000	B30-R6000
●	B33-13-8423	White	31.75	6.35	-	9.35	2500	B30-R6000
●	B33-104-8423	White	38.10	6.35	-	9.33	2500	B30-R6000
●	B33-600-8423	White	38.10	19.05	-	22.05	2500	B30-R6000
B-8591: Polyester								
●	B33-37-8591-BK	Black	38.10	12.70	-	15.24	4000	B30-R4400-WT
●	B33-37-8591-SL	Silver	38.10	12.70	-	15.24	4000	B30-R6600
●	B33-37-8591-WT	White	38.10	12.70	-	15.24	4000	B30-R6600
●	B33-37-8591-YL	Yellow	38.10	12.70	-	15.24	4000	B30-R6600
▲	B33-53-8591-BK	Black	50.80	12.70	-	15.24	2500	B30-R4400-WT
▲	B33-53-8591-SL	Silver	50.80	12.70	-	15.24	2500	B30-R6600
▲	B33-53-8591-WT	White	50.80	12.70	-	15.24	2500	B30-R6600
▲	B33-53-8591-YL	Yellow	50.80	12.70	-	15.24	2500	B30-R6600
▲	B33-7-8591-BK	Black	69.85	31.75	-	34.93	1000	B30-R4400-WT
▲	B33-7-8591-SL	Silver	69.85	31.75	-	34.93	1000	B30-R6600
▲	B33-7-8591-WT	White	69.85	31.75	-	34.93	1000	B30-R6600
▲	B33-7-8591-YL	Yellow	69.85	31.75	-	34.93	1000	B30-R6600
▲	B33-76-8591-BK	Black	101.60	76.20	-	79.38	400	B30-R4400-WT
▲	B33-76-8591-SL	Silver	101.60	76.20	-	79.38	400	B30-R6600
▲	B33-76-8591-WT	White	101.60	76.20	-	79.38	400	B30-R6600
▲	B33-76-8591-YL	Yellow	101.60	76.20	-	79.38	400	B30-R6600
∞	B33C-2000-8591-BK	Black	50.80	-	30.48	-	1	B30-R4400-WT
∞	B33C-2000-8591-SL	Silver	50.80	-	30.48	-	1	B30-R6600
∞	B33C-2000-8591-WT	White	50.80	-	30.48	-	1	B30-R6600
∞	B33C-2000-8591-YL	Yellow	50.80	-	30.48	-	1	B30-R6600
∞	B33C-3000-8591-BK	Black	76.20	-	30.48	-	1	B30-R4400-WT
∞	B33C-3000-8591-SL	Silver	76.20	-	30.48	-	1	B30-R6600
∞	B33C-3000-8591-WT	White	76.20	-	30.48	-	1	B30-R6600
∞	B33C-3000-8591-YL	Yellow	76.20	-	30.48	-	1	B30-R6600
∞	B33C-4000-8591-BK	Black	101.60	-	30.48	-	1	B30-R4400-WT
∞	B33C-4000-8591-SL	Silver	101.60	-	30.48	-	1	B30-R6600
∞	B33C-4000-8591-WT	White	101.60	-	30.48	-	1	B30-R6600
∞	B33C-4000-8591-YL	Yellow	101.60	-	30.48	-	1	B30-R6600



PRODUCT AND GENERAL PURPOSE IDENTIFICATION

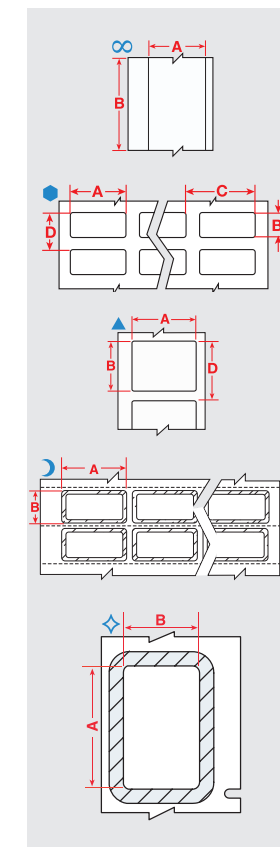
Metallised polyester labels

For product labelling, asset tracking and general industrial identification

- Silver metallic label withstands solvents and variable temperatures
- Ideal for serial number plates and rating plates with nameplate quality and metal looking finish



Diagram	Order Reference	Colour	Label Width A (mm)	Label Height B (mm)	Label Length B (m)	Vertical Repeat D (mm)	Labels per Roll	Labels per Row	Printer Ribbon Series
B-413: Metallic, Non-metal Polyester									
∞	B33C-2000-413	Silver	50.80	-	30.48	-	1	1	B30-R6000
∞	B33C-3000-413	Silver	76.20	-	30.48	-	1	1	B30-R6000
∞	B33C-4000-413	Silver	101.60	-	30.48	-	1	1	B30-R6000
●	B33-5-413	Silver	25.40	12.70	-	15.24	7000	3	B30-R6000
●	B33-37-413	Silver	38.10	12.70	-	15.24	5000	2	B30-R6000
●	B33-6-413	Silver	38.10	19.05	-	22.23	3300	2	B30-R6000
▲	B33-17-413	Silver	50.80	25.40	-	28.58	1500	1	B30-R6000
▲	B33-53-413	Silver	50.80	12.70	-	15.24	2500	1	B30-R6000
▲	B33-7-413	Silver	69.85	31.75	-	34.93	1000	1	B30-R6000
▲	B33-18-413	Silver	76.20	25.40	-	28.58	1500	1	B30-R6000
▲	B33-19-413	Silver	76.20	50.80	-	53.98	700	1	B30-R6000
▲	B33-55-413	Silver	101.60	50.80	-	53.98	750	1	B30-R6000
B-428: Metallised Polyester									
∞	B30C-2000-428	Light Grey	50.80	-	30.48	-	1	1	B30-R4300
∞	B30C-4000-428	Light Grey	101.60	-	39.62	-	1	1	B30-R4300
●	B33-616-428	Light Grey	22.86	19.05	-	22.05	3000	3	B30-R4300
●	B33-5-428	Light Grey	25.40	12.70	-	15.24	5000	3	B30-R4300
●	B33-37-428	Light Grey	38.10	12.70	-	15.24	4000	2	B30-R4300
●	B33-6-428	Light Grey	38.10	19.05	-	22.23	3000	2	B30-R4300
▲	B33-53-428	Light Grey	50.80	12.70	-	15.24	2500	1	B30-R4300
▲	B33-17-428	Light Grey	50.80	25.40	-	28.58	1500	1	B30-R4300
▲	B33-7-428	Light Grey	69.85	31.75	-	34.93	1000	1	B30-R4300
▲	B33-19-428	Light Grey	76.20	50.80	-	53.98	500	1	B30-R4300
▲	B33-18-428	Light Grey	76.20	25.40	-	28.58	1500	1	B30-R4300
▲	B33-55-428	Light Grey	101.60	50.80	-	53.98	500	1	B30-R4300
▲	B33-161-428	Light Grey	101.60	101.60	-	104.78	300	1	B30-R4300
B-428/B-966B: Metallised Polyester with Polyester Overlaminate									
∞	B33-22-428	Light Grey	31.75	19.05	-	28.58	1700	2	B30-R4300
◇	B33-23-428	Light Grey	50.80	25.40	-	34.93	700	1	B30-R4300
◇	B33-24-428	Light Grey	69.85	44.45	-	53.98	450	1	B30-R4300
B-434A: Metallised Polyester									
∞	B30C-2000-434	Silver	50.80	-	30.48	-	1	1	B30-R6000
∞	B30C-3000-434	Silver	76.20	-	30.48	-	1	1	B30-R6000
∞	B30C-4000-434	Silver	101.60	-	39.62	-	1	1	B30-R6000
●	B33-5-434	Silver	25.40	12.70	-	15.24	5000	3	B30-R6000
▲	B33-136-434	Silver	38.10	19.05	-	22.23	1500	1	B30-R6000
●	B33-37-434	Silver	38.10	12.70	-	15.24	5000	2	B30-R6000
●	B33-6-434	Silver	38.10	19.05	-	22.23	3300	2	B30-R6000
▲	B33-17-434	Silver	50.80	25.40	-	28.58	1500	1	B30-R6000
▲	B33-53-434	Silver	50.80	12.70	-	15.24	2500	1	B30-R6000
▲	B33-7-434	Silver	69.85	31.75	-	34.93	1000	1	B30-R6000
▲	B33-18-434	Silver	76.20	25.40	-	28.58	1500	1	B30-R6000
▲	B33-19-434	Silver	76.20	50.80	-	53.98	500	1	B30-R6000
▲	B33-55-434	Silver	101.60	50.80	-	53.98	750	1	B30-R6000
▲	B33-161-434	Silver	101.60	101.60	-	104.78	350	1	B30-R6000



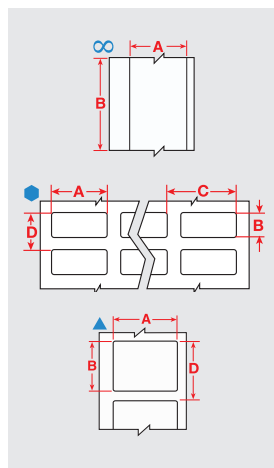
PRODUCT AND GENERAL PURPOSE IDENTIFICATION



Metallised polyester labels (continued)

For product labelling, asset tracking and general industrial identification

Diagram	Order Reference	Colour	Label Width A (mm)	Label Height B (mm)	Label Length B (m)	Vertical Repeat D (mm)	Labels per Roll	Labels per Row	Printer Ribbon Series
B-435A: Metallised Polyester									
∞	B33C-2000-435	Silver	50.80	-	30.48	-	1	1	B30-R6000
∞	B33C-3000-435	Silver	76.20	-	30.48	-	1	1	B30-R6000
●	B33-5-435	Silver	25.40	12.70	-	15.24	7000	3	B30-R6000
●	B33-37-435	Silver	38.10	12.70	-	15.24	5000	2	B30-R6000
●	B33-6-435	Silver	38.10	19.05	-	22.23	3300	2	B30-R6000
▲	B33-53-435	Silver	50.80	12.70	-	15.24	2500	1	B30-R6000
●	B33-17-435	Silver	50.80	25.40	-	28.58	1500	1	B30-R6000
▲	B33-7-435	Silver	69.85	31.75	-	34.93	1000	1	B30-R6000
▲	B33-18-435	Silver	76.20	25.40	-	28.58	1500	1	B30-R6000
▲	B33-19-435	Silver	76.20	50.80	-	53.98	500	1	B30-R6000
▲	B33-55-435	Silver	101.60	50.80	-	53.98	750	1	B30-R6000
●	B33-161-435	Silver	101.60	101.60	-	104.78	350	1	B30-R6000
B-480A: Metallic, Non-metal Polyester									
∞	B30C-4000-480	Light Grey	101.60	-	35.05	-	1	1	B30-R6000
B-486B: Metallised Polyester									
∞	B30C-4000-486	Light Grey	101.60	-	35.05	-	1	1	B30-R4300
▲	B33-59-486	Light Grey	25.40	12.70	-	15.24	2500	1	B30-R4300
●	B33-5-486	Light Grey	25.40	12.70	-	15.24	5000	3	B30-R4300
▲	B33-53-486	Light Grey	50.80	12.70	-	15.24	2500	1	B30-R4300
▲	B33-17-486	Light Grey	50.80	25.40	-	28.58	1300	1	B30-R4300
▲	B33-7-486	Light Grey	69.85	31.75	-	34.93	1000	1	B30-R4300
▲	B33-19-486	Light Grey	76.20	50.80	-	53.98	500	1	B30-R4300
▲	B33-18-486	Light Grey	76.20	25.40	-	28.58	1300	1	B30-R4300
▲	B33-161-486	Light Grey	101.60	101.60	-	104.78	250	1	B30-R4300
▲	B33-76-486	Light Grey	101.60	76.20	-	79.38	500	1	B30-R4300
B-565: Metallised Polyester									
∞	B30C-1125-565-SL	Silver	28.58	-	30.48	-	1	1	B30-R10000
∞	B30C-2250-565-SL	Silver	57.15	-	30.48	-	1	1	B30-R10000
∞	B30C-4000-565-SL	Silver	101.60	-	30.48	-	1	1	B30-R10000
B-7563: Metallised Polyester									
●	B33-600-7563	Silver	38.10	19.05	-	22.05	2500	2	B30-R6000
●	B30-135-7563	Silver	38.10	19.05	-	22.22	3154	2	B30-R6000
▲	B30-17-7563	Silver	50.80	25.40	-	28.58	1226	1	B30-R6000
▲	B30-7-7563	Silver	69.85	31.75	-	34.93	1003	1	B30-R6000
▲	B30-222-7563	Silver	76.20	50.80	-	57.15	649	1	B30-R6000



Engraving solutions

For extreme environments requiring permanent physical marking, explore high-precision engraving solutions from **Gravotech**, by **Brady**.

PRODUCT AND GENERAL PURPOSE IDENTIFICATION

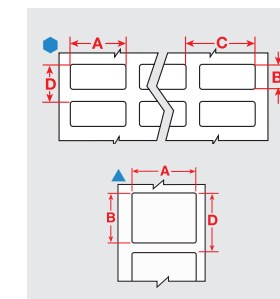
Polypropylene labels

General labelling material for indoor use

- ▶ Outstanding chemical and solvent resistance and print performance
- ▶ Not recommended for prolonged outdoor use (use B-595 indoor/outdoor vinyl for 8-10 year outdoor use)



Diagram	Order Reference	Colour	Label Width A (mm)	Label Height B (mm)	Vertical Repeat D (mm)	Labels per Roll	Printer Ribbon Series
B-425A: Polypropylene							
●	B33-5-425	White	25.40	12.70	15.24	5000	B30-R4300
▲	B33-17-425	White	50.80	25.40	28.58	1500	B30-R4300
▲	B33-18-425	White	76.20	25.40	28.58	1500	B30-R4300
▲	B33-19-425	White	76.20	50.80	53.98	500	B30-R4300



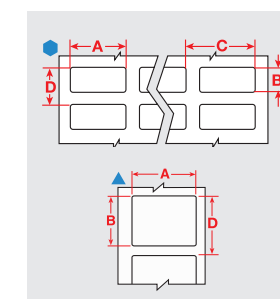
General identification vinyl labels

High adhesion

- ▶ Designed for use in ambient conditions with limited solvent exposure
- ▶ Indoor/outdoor vinyl film has an acrylic pressure sensitive adhesive
- ▶ Service temperature of -70 to 40° C
- ▶ Available in many different colours as a custom option



Diagram	Order Reference	Colour	Label Width A (mm)	Label Height B (mm)	Vertical Repeat D (mm)	Labels per Roll	Printer Ribbon Series
B-439: Vinyl							
●	B33-5-439	White	25.40	12.70	15.24	7000	B30-R6000
●	B33-37-439	White	38.10	12.70	15.24	5000	B30-R6000
▲	B33-17-439	White	50.80	25.40	28.58	1000	B30-R6000
▲	B33-53-439	White	50.80	12.70	15.24	2500	B30-R6000
▲	B33-18-439	White	76.20	25.40	28.58	1000	B30-R6000
▲	B33-19-439	White	76.20	50.80	53.98	700	B30-R6000
▲	B33-55-439	White	101.60	50.80	53.98	700	B30-R6000
▲	B33-76-439	White	101.60	76.20	79.38	500	B30-R6000



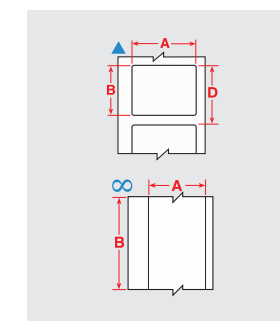
Paper labels

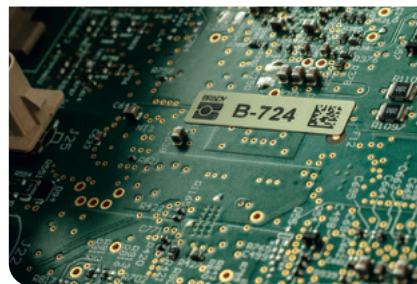
Economical choice for light duty general identification

- ▶ White finish and matt topcoat
- ▶ Excellent contrast and smear resistance for barcode printing



Diagram	Order Reference	Colour	Label Width A (mm)	Label Height B (mm)	Label Length B (m)	Vertical Repeat D (mm)	Labels per Roll	Printer Ribbon Series
B-424: Paper								
▲	B33-53-424	White	50.80	12.70	-	15.24	2500	B30-R4300
▲	B33-17-424	White	50.80	25.40	-	28.58	1500	B30-R4300
▲	B33-7-424	White	69.85	31.75	-	34.93	1000	B30-R4300
▲	B33-20-424	White	76.20	127.00	-	130.18	250	B30-R4300
▲	B33-19-424	White	76.20	50.80	-	53.98	500	B30-R4300
▲	B33-18-424	White	76.20	25.40	-	28.58	1500	B30-R4300
▲	B33-55-424	White	101.60	50.80	-	53.98	750	B30-R4300
▲	B33-25-424	White	101.60	152.40	-	155.58	350	B30-R4300
∞	B30C-4000-424	White	101.60	-	45.72	-	1	B30-R4300



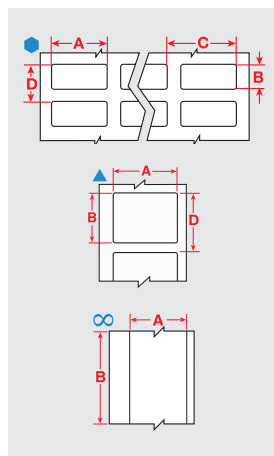


B-724, B-728, B-729, B-777 and B-797 Standard polyimide labels

For circuit board labels and high-temperature general identification applications

- ▶ Withstands the various processes, fluxes and cleaning solvents encountered in the manufacture of printed circuit boards
- ▶ For use on top bottom-side component identification or board identification
- ▶ 2 temperature levels to meet your needs

Diagram	Order Reference	Colour	Label Width A (mm)	Label Height B (mm)	Label Length B (m)	Vertical Repeat D (mm)	Labels per Roll	Printer Ribbon Series
B-724: Polyimide								
●	B33-340-724	Amber	9.53	9.53	-	12.07	10000	B30-R4300
▲	B33-344-724	Amber	12.70	5.08	-	8.26	3700	B30-R4300
●	B33-12-724	Amber	12.70	11.10	-	13.64	10000	B30-R4300
●	B33-341-724	Amber	16.51	5.08	-	8.26	10000	B30-R4300
▲	B33-342-724	Amber	16.51	5.08	-	8.26	3700	B30-R4300
●	B33-1-724	Amber	19.05	6.35	-	8.89	5000	B30-R4300
▲	B33-46-724	Amber	19.05	6.35	-	8.89	5000	B30-R4300
●	B33-2-724	Amber	22.86	6.35	-	8.89	5000	B30-R4300
●	B33-51-724	Amber	25.40	6.35	-	8.89	10000	B30-R4300
▲	B33-103-724	Amber	25.40	6.35	-	8.89	4000	B30-R4300
●	B33-5-724	Amber	25.40	12.70	-	15.24	7000	B30-R4300
●	B33-13-724	Amber	31.75	6.35	-	9.53	7000	B30-R4300
●	B33-4-724	Amber	38.10	6.35	-	8.89	5000	B30-R4300
∞	B30C-4000-724	Amber	101.60	-	39.62	-	1	B30-R4300
B-728: Polyimide								
●	B33-70-728	White	6.35	6.35	-	8.89	20000	B30-R6000
●	B33-340-728	White	9.53	9.53	-	12.07	10000	B30-R6000
●	B33-12-728	White	12.70	11.10	-	13.64	10000	B30-R6000
●	B33-341-728	White	16.51	5.08	-	8.26	10000	B30-R6000
●	B33-1-728	White	19.05	6.35	-	8.89	10000	B30-R6000
●	B33-2-728	White	22.86	6.35	-	8.89	10000	B30-R6000
●	B33-5-728	White	25.40	12.70	-	15.24	7000	B30-R6000
●	B33-51-728	White	25.40	6.35	-	8.89	10000	B30-R6000
▲	B33-103-728	White	25.40	6.35	-	8.89	4000	B30-R6000
●	B33-13-728	White	31.75	6.35	-	9.53	7000	B30-R6000
▲	B33-43-728	White	31.75	6.35	-	8.89	4000	B30-R6000
●	B33-4-728	White	38.10	6.35	-	8.89	8000	B30-R6000
B-729: Polyimide								
●	B33-70-729	White	6.35	6.35	-	8.89	20000	B30-R6000
●	B33-340-729	White	9.53	9.53	-	12.07	10000	B30-R6000
●	B33-12-729	White	12.70	11.10	-	13.64	10000	B30-R6000
●	B33-341-729	White	16.51	5.08	-	8.26	10000	B30-R6000
●	B33-1-729	White	19.05	6.35	-	8.89	10000	B30-R6000
●	B33-2-729	White	22.86	6.35	-	8.89	10000	B30-R6000
●	B33-5-729	White	25.40	12.70	-	15.24	7000	B30-R6000
●	B33-51-729	White	25.40	6.35	-	8.89	10000	B30-R6000
▲	B33-103-729	White	25.40	6.35	-	8.89	4000	B30-R6000
●	B33-13-729	White	31.75	6.35	-	9.53	7000	B30-R6000
▲	B33-43-729	White	31.75	6.35	-	8.89	4000	B30-R6000
●	B33-4-729	White	38.10	6.35	-	8.89	8000	B30-R6000



B-724, B-728, B-729, B-777 and B-797 Standard polyimide labels (continued)

For circuit board labels and high-temperature general identification applications

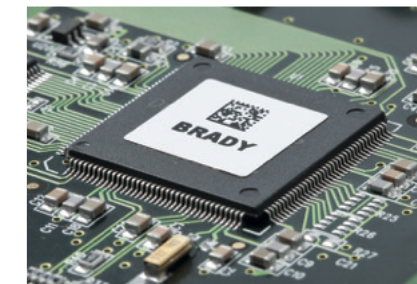
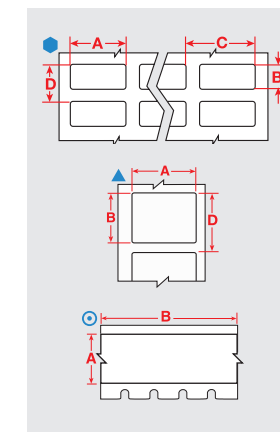


Diagram	Order Reference	Colour	Label Width A (mm)	Label Height B (mm)	Label Length B (m)	Vertical Repeat D (mm)	Labels per Roll	Printer Ribbon Series
B-777: Polyimide								
●	B33-70-777	White	6.35	6.35	-	8.89	20000	B30-R6300
●	B33-340-777	White	9.53	9.53	-	12.07	10000	B30-R6300
●	B33-12-777	White	12.70	11.10	-	13.64	10000	B30-R6300
●	B33-341-777	White	16.51	5.08	-	8.26	10000	B30-R6300
●	B33-1-777	White	19.05	6.35	-	8.89	10000	B30-R6300
●	B33-2-777	White	22.86	6.35	-	8.89	10000	B30-R6300
●	B33-51-777	White	25.40	6.35	-	8.89	10000	B30-R6300
▲	B33-103-777	White	25.40	6.35	-	8.89	4000	B30-R6300
●	B33-5-777	White	25.40	12.70	-	15.24	7000	B30-R6300
●	B33-13-777	White	31.75	6.35	-	9.53	7000	B30-R6300
▲	B33-43-777	White	31.75	6.35	-	8.89	4000	B30-R6300
●	B33-4-777	White	38.10	6.35	-	8.89	8000	B30-R6300
B-797: Polyimide								
●	B33-70-797	White	6.35	6.35	-	8.89	20000	B30-R6300
●	B33-11-797	White	6.35	6.35	-	9.53	5000	B30-R6300
●	B33-71-797	White	8.00	8.00	-	11.43	20000	B30-R6300
●	B33-340-797	White	9.53	9.53	-	12.07	10000	B30-R6300
●	B33-12-797	White	12.70	11.10	-	13.64	10000	B30-R6300
●	B33-149-797	White	12.70	12.70	-	15.24	5000	B30-R6300
●	B33-341-797	White	16.51	5.08	-	8.26	10000	B30-R6300
▲	B33-342-797	White	16.51	5.08	-	8.26	3700	B30-R6300
●	B33-1-797	White	19.05	6.35	-	8.89	5000	B30-R6300
▲	B33-49-797	White	22.86	6.35	-	8.89	5000	B30-R6300
●	B33-2-797	White	22.86	6.35	-	8.89	5000	B30-R6300
●	B33-51-797	White	25.40	6.35	-	8.89	10000	B30-R6300
●	B33-3-797	White	25.40	9.53	-	12.07	20000	B30-R6300
●	B33-5-797	White	25.40	12.70	-	15.24	7000	B30-R6300
▲	B33-103-797	White	25.40	6.35	-	8.89	5000	B30-R6300
▲	B33-58-797	White	25.40	9.53	-	12.07	4000	B30-R6300
▲	B33-59-797	White	25.40	12.70	-	15.24	2500	B30-R6300
●	B33-13-797	White	31.75	6.35	-	9.53	5000	B30-R6300
▲	B33-43-797	White	31.75	6.35	-	8.89	5000	B30-R6300
▲	B33-44-797	White	34.93	6.35	-	8.89	5000	B30-R6300
▲	B33-45-797	White	38.10	6.35	-	8.89	5000	B30-R6300
●	B33-4-797	White	38.10	6.35	-	8.89	10000	B30-R6300
▲	B33-72-797	White	44.45	6.35	-	8.89	5000	B30-R6300
▲	B33-15-797	White	50.80	6.35	-	9.53	3200	B30-R6300
∞	B30C-4000-797	White	101.60	-	39.62	-	1	B30-R6300



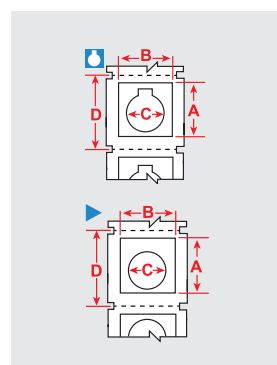


B-593 Raised profile labels - Push button style

Lower cost than engraved legend plates

- ▶ High gloss, polyester label with thick raised profile and ultra-aggressive adhesive (total thickness = 0.65 mm)
- ▶ High performance, low cost substitute to engraved plates
- ▶ 10 year outdoor durability rating
- ▶ On-demand labelling: labels print out in less than 4 seconds
- ▶ 5 push button sizes (including keyed with 22.50 and 30.50 mm hole diam and non-keyed with 22.50 mm hole diam)

Diagram	Order Reference	Colour	Label Width A (mm)	Label Height B (mm)	Vertical Repeat D (mm)	Labels per Roll	Printer Ribbon Series
B-593: Polyester							
	B30EP-167-593-BK	Black	30.48	38.10	44.45	200	B30-R4400-WT
	B30EP-167-593-GN	Green	30.48	38.10	44.45	200	B30-R4400-WT
	B30EP-167-593-RD	Red	30.48	38.10	44.45	200	B30-R4400-WT
	B30EP-167-593-WT	White	30.48	38.10	44.45	200	B30-R6000
	B30EP-167-593-YL	Yellow	30.48	38.10	44.45	200	B30-R6000
	B30EP-167U-593-BK	Black	30.48	38.10	44.45	200	B30-R4400-WT
	B30EP-167U-593-GN	Green	30.48	38.10	44.45	200	B30-R4400-WT
	B30EP-167U-593-RD	Red	30.48	38.10	44.45	200	B30-R4400-WT
	B30EP-167U-593-WT	White	30.48	38.10	44.45	200	B30-R6000
	B30EP-167U-593-YL	Yellow	30.48	38.10	44.45	200	B30-R6000
	B30EP-168-593-BK	Black	30.48	48.26	53.98	180	B30-R4400-WT
	B30EP-168-593-GN	Green	30.48	48.26	53.98	180	B30-R4400-WT
	B30EP-168-593-RD	Red	30.48	48.26	53.98	180	B30-R4400-WT
	B30EP-168-593-WT	White	30.48	48.26	53.98	180	B30-R6000
	B30EP-168-593-YL	Yellow	30.48	48.26	53.98	180	B30-R6000
	B30EP-169-593-BK	Black	45.72	45.72	50.80	190	B30-R4400-WT
	B30EP-169-593-GN	Green	45.72	45.72	50.80	190	B30-R4400-WT
	B30EP-169-593-RD	Red	45.72	45.72	50.80	190	B30-R4400-WT
	B30EP-169-593-WT	White	45.72	45.72	50.80	190	B30-R6000
	B30EP-169-593-YL	Yellow	45.72	45.72	50.80	190	B30-R6000
	B30EP-170-593-BK	Black	60.96	60.96	66.68	145	B30-R4400-WT
	B30EP-170-593-RD	Red	60.96	60.96	66.68	145	B30-R4400-WT
	B30EP-170-593-WT	White	60.96	60.96	66.68	145	B30-R6000
	B30EP-170-593-YL	Yellow	60.96	60.96	66.68	145	B30-R6000



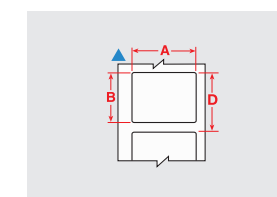
B-593 Raised profile labels

Lower cost than engraved legend plates

- ▶ High gloss, polyester label with thick raised profile and ultra-aggressive adhesive (0.65 mm)
- ▶ Ideal for inside-panel backer board labels and front-of-enclosure labelling
- ▶ On-demand labelling: labels print out in less than 4 seconds
- ▶ No need to abbreviate your text to avoid per character engraving charges
- ▶ 10-year outdoor durability rating
- ▶ 6 colours, 7 rectangular sizes



Diagram	Order Reference	Colour	Label Width A (mm)	Label Height B (mm)	Vertical Repeat D (mm)	Labels per Roll	Printer Ribbon Series
B-593: Polyester							
	B30EP-171-593-BK	Black	26.92	12.45	19.05	500	B30-R4400-WT
	B30EP-171-593-GN	Green	26.92	12.45	19.05	500	B30-R4400-WT
	B30EP-171-593-RD	Red	26.92	12.45	19.05	500	B30-R4400-WT
	B30EP-171-593-SL	Silver	26.92	12.45	19.05	500	B30-R6000
	B30EP-171-593-WT	White	26.92	12.45	19.05	500	B30-R6000
	B30EP-171-593-YL	Yellow	26.92	12.45	19.05	500	B30-R6000
	B30EP-172-593-BK	Black	44.96	15.00	21.59	450	B30-R4400-WT
	B30EP-172-593-GN	Green	44.96	15.00	21.59	450	B30-R4400-WT
	B30EP-172-593-RD	Red	44.96	15.00	21.59	450	B30-R4400-WT
	B30EP-172-593-SL	Silver	44.96	15.00	21.59	450	B30-R6000
	B30EP-172-593-WT	White	44.96	15.00	21.59	450	B30-R6000
	B30EP-172-593-YL	Yellow	44.96	15.00	21.59	450	B30-R6000
	B30EP-173-593-BK	Black	50.80	25.40	31.75	300	B30-R4400-WT
	B30EP-173-593-GN	Green	50.80	25.40	31.75	300	B30-R4400-WT
	B30EP-173-593-RD	Red	50.80	25.40	31.75	300	B30-R4400-WT
	B30EP-173-593-SL	Silver	50.80	25.40	31.75	300	B30-R6000
	B30EP-173-593-WT	White	50.80	25.40	31.75	300	B30-R6000
	B30EP-173-593-YL	Yellow	50.80	25.40	31.75	300	B30-R6000
	B30EP-174-593-BK	Black	101.60	25.40	28.58	300	B30-R4400-WT
	B30EP-174-593-GN	Green	101.60	25.40	28.58	300	B30-R4400-WT
	B30EP-174-593-RD	Red	101.60	25.40	28.58	300	B30-R4400-WT
	B30EP-174-593-SL	Silver	101.60	25.40	28.58	300	B30-R6000
	B30EP-174-593-WT	White	101.60	25.40	28.58	300	B30-R6000
	B30EP-174-593-YL	Yellow	101.60	25.40	28.58	300	B30-R6000
	B30EP-175-593-BK	Black	76.20	19.05	25.40	375	B30-R4400-WT
	B30EP-175-593-GN	Green	76.20	19.05	25.40	375	B30-R4400-WT
	B30EP-175-593-WT	White	76.20	19.05	25.40	375	B30-R6000
	B30EP-175-593-YL	Yellow	76.20	19.05	25.40	375	B30-R6000
	B30EP-176-593-BK	Black	76.20	25.40	31.75	300	B30-R4400-WT
	B30EP-176-593-GN	Green	76.20	25.40	31.75	300	B30-R4400-WT
	B30EP-176-593-WT	White	76.20	25.40	31.75	300	B30-R6000
	B30EP-176-593-YL	Yellow	76.20	25.40	31.75	300	B30-R6000
	B30EP-177-593-BK	Black	76.20	63.50	69.85	125	B30-R4400-WT
	B30EP-177-593-GN	Green	76.20	63.50	69.85	125	B30-R4400-WT
	B30EP-177-593-WT	White	76.20	63.50	69.85	125	B30-R6000
	B30EP-177-593-YL	Yellow	76.20	63.50	69.85	125	B30-R6000



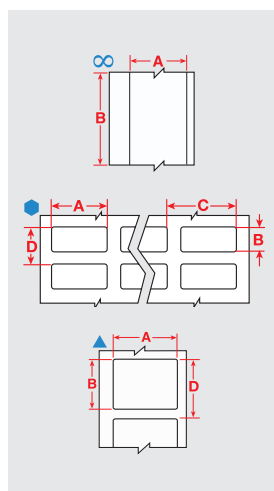


Inside-panel component labels

For automation & electrical panels and enclosures

- ▶ Various sizes in several durable material types
- ▶ Ideal for marking backer board, DIN rail, relays, PLCs, switches, solenoids, drive motors and other components
- ▶ All recommended materials are flexible and have high-tack adhesives for adhesion to wide variety of surfaces and components

Diagram	Order Reference	Colour	Label Width A (mm)	Label Height B (mm)	Label Length B (m)	Vertical Repeat D (mm)	Labels per Roll	Printer Ribbon Series
B-422: Polyester								
∞	B33C-375-422	White	9.53	-	25.91 m	-	1	B30-R6000
B-483A: Polyester								
●	B33-149-483	White	12.70	12.70	15.24	5000	B30-R6000	
●	B33-5-483	White	25.40	12.70	15.24	5000	B30-R6000	
▲	B33-17-483	White	50.80	25.40	28.58	1500	B30-R6000	
▲	B33-7-483	White	69.85	31.75	34.93	1000	B30-R6000	
▲	B33-19-483	White	76.20	50.80	53.98	500	B30-R6000	
▲	B33-18-483	White	76.20	25.40	28.58	1500	B30-R6000	
▲	B33-55-483	White	101.60	50.80	53.98	750	B30-R6000	
▲	B33-76-483	White	101.60	76.20	79.38	500	B30-R6000	
B-484A: Polyester								
▲	B33-125-484	White	22.86	12.70	15.24	1500	B30-R6000	
●	B33-5-484	White	25.40	12.70	15.24	5000	B30-R6000	
▲	B33-136-484	White	38.10	19.05	22.23	1500	B30-R6000	
▲	B33-17-484	White	50.80	25.40	28.58	1500	B30-R6000	
▲	B33-18-484	White	76.20	25.40	28.58	1500	B30-R6000	
▲	B33-19-484	White	76.20	50.80	53.98	500	B30-R6000	
▲	B33-55-484	White	101.60	50.80	53.98	750	B30-R6000	
▲	B33-161-484	White	101.60	101.60	104.78	350	B30-R6000	
B-498: Vinyl Cloth								
●	B33-90-498	White	6.35	36.50	39.70	2500	B30-R6200	
●	B33-87-498	White	12.70	36.50	39.70	2500	B30-R6200	
●	B33-68-498	White	12.70	19.05	21.59	5000	B30-R6200	
●	B33-1-498	White	19.05	6.35	8.89	5000	B30-R6200	
▲	B33-254-498	White	19.05	19.05	21.59	1000	B30-R6200	
●	B33-95-498	White	20.32	36.50	39.70	2300	B30-R6200	
●	B33-88-498	White	25.40	19.05	22.23	2500	B30-R6200	
●	B33-5-498	White	25.40	12.70	15.24	5000	B30-R6200	
●	B33-89-498	White	25.40	36.50	39.70	2300	B30-R6200	
●	B33-325-498	White	25.40	63.50	66.68	700	B30-R6200	
●	B33-326-498	White	25.40	101.60	104.78	450	B30-R6200	
●	B33-327-498	White	38.10	101.60	104.78	450	B30-R6200	
●	B33-328-498	White	38.10	152.40	155.58	300	B30-R6200	

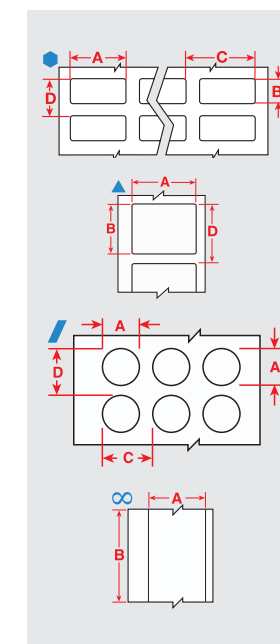


Inside-panel component labels (Continued)

For automation & electrical panels and enclosures



Diagram	Order Reference	Colour	Label Width A (mm)	Label Height B (mm)	Label Length B (m)	Vertical Repeat D (mm)	Labels per Roll	Printer Ribbon Series
B-499: Nylon Cloth								
●	B33-68-499	White	12.70	19.05	21.59	1500	B30-R4300	
●	B33-165-499	White	20.32	36.50	39.70	2500	B30-R4300	
▲	B33-125-499	White	22.86	12.70	15.24	1500	B30-R4300	
●	B33-152-499	White	25.40	9.53	12.07	1500	B30-R4300	
▲	B33-136-499	White	38.10	19.05	22.23	1500	B30-R4300	
▲	B33-151-499	White	50.80	6.35	8.89	1500	B30-R4300	
▲	B33-137-499	White	50.80	25.40	28.58	1100	B30-R4300	
/	B33-143-499	White	-	-	12.70	1500	B30-R4300	
/	B33-144-499	White	-	-	15.88	1500	B30-R4300	
/	B33-602-499	White	-	-	16.50	3000	B30-R6000	
/	B33-603-499	White	-	-	15.70	3000	B30-R6000	
/	B33-602-499YL	Yellow	-	-	16.50	3000	B30-R6000	
/	B33-603-499YL	Yellow	-	-	15.70	3000	B30-R6000	
B-593: Polyester								
▲	B30EP-171-593-BK	Black	26.92	12.45	19.05	500	B30-R4400-WT	
▲	B30EP-171-593-GN	Green	26.92	12.45	19.05	500	B30-R4400-WT	
▲	B30EP-171-593-RD	Red	26.92	12.45	19.05	500	B30-R4400-WT	
▲	B30EP-171-593-SL	Silver	26.92	12.45	19.05	500	B30-R6000	
▲	B30EP-171-593-WT	White	26.92	12.45	19.05	500	B30-R6000	
▲	B30EP-171-593-YL	Yellow	26.92	12.45	19.05	500	B30-R6000	
B-595: Vinyl								
∞	B30C-500-595-WT	White	12.70	-	30.48 m	-	1	B30-R10000
∞	B30C-500-595-YL	Yellow	12.70	-	30.48 m	-	1	B30-R10000



B-498 Adhesive terminal block markers

Holds strong but can be removed cleanly and re-applied

- ▶ Specially designed narrow-width continuous label for alignment on terminal blocks and patch panels
- ▶ Highly unique adhesive and cloth construction gives excellent holding power and still allows for clean removal and re-application

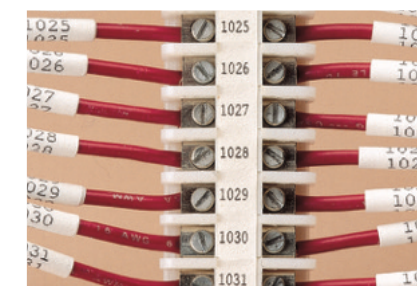
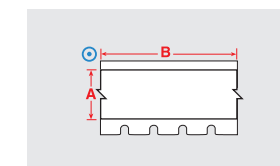


Diagram	Order Reference	Colour	Label Width A (mm)	Label Length B (m)	Labels per Roll	Printer Ribbon Series
B-498: Vinyl Cloth						
⊙	B33C-312-498	White	7.92	25.91 m	1	B30-R6200
⊙	B33C-375-498	White	9.53	25.91 m	1	B30-R6200



How to select a wire marker

There are four main questions to ask yourself when you're starting the process of marking wires. These questions will help you select a wire marker that best suits your needs.

1. Are you marking the wire after termination?

Sleeve markers can only be used before termination because they must be slipped over the open end of the wire. These non-adhesive markers provide flexibility as they can be moved prior to being heat-shrunk. Once shrunk, these markers fit snugly around wires for permanent identification which will stand up to harsh environments.

2. What size of wire are you marking?

The diameter of the wire determines the size of the sleeve or the height of the label to be used.

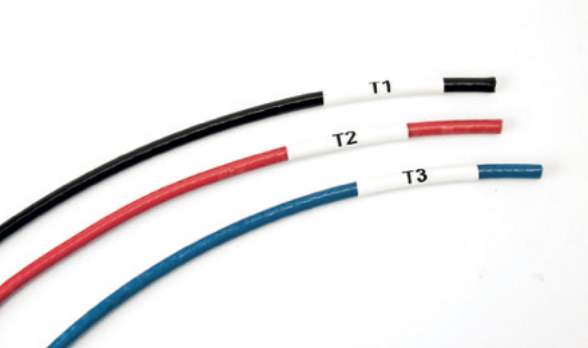
3. Will you print your own markers or purchase preprinted ones?

Pre-printed markers are available in a large variety of stock legends, and custom legends are available for any large jobs. These markers come in a variety of packaging and formats for ease of use and ease of transport. They are ideal for any application.

Printable markers are meant to be printed with variable legends as needed. Various methods for this include: portable wire marking printers or computer software linked to thermal transfer, dot matrix or laser-printers. An extensive array of sizes are available for every application. These printable markers offer the flexibility of printing legends on demand. They are also ideal for applications that require long legends.

4. In what type of environment will these wire markers be placed?

It is extremely important to select a wire marker material that will last for your application. Too many companies go to the trouble of marking only to have to do it all again because they did not select the correct material. Be sure to ask yourself these questions before you select your wire marker.



How to select a marker size

Brady offers a variety of marker sizes for your wire marking needs. Please view the chart listed below to assist you in choosing the minimum recommended flattened sleeve height for the wire or cable that you are identifying.

Order Reference	Label Height B (mm)	Max. Wire Diameter (mm)	Min. Wire Diameter (mm)
B-342 Heat-shrink Polyolefin Sleeve			
094	4.62	2.03	0.58
125	5.97	2.79	1.17
187	8.51	3.81	1.57
250	11.15	5.46	2.39
375	16.38	8.13	3.18
500	21.62	11.43	4.75
750	31.75	17.78	6.35
1000	42.16	24.13	9.53
1500	61.80	36.83	12.70
B-345 High Temperature Heat-shrink Polyvinylidene Fluoride Sleeve			
094	4.62	2.03	0.80
125	5.97	2.79	1.57
187	8.51	3.81	2.39
250	11.15	5.46	3.18
375	16.38	8.13	4.75
500	21.62	11.43	6.35
750	31.75	17.78	9.53
1000	42.16	24.13	11.40
1500	61.80	36.83	19.05
B-7641 Heat-shrink Polyolefin Sleeve			
094	4.62	2.03	1.19
125	5.97	2.79	1.57
187	8.51	3.81	2.39
250	11.15	5.46	3.18
375	16.38	8.13	4.78
500	21.62	11.43	6.35
750	31.75	17.78	9.53
1000	42.16	24.13	12.70
1500	61.80	36.83	19.05
2000	80.39	49.53	25.40
B-7642 Heat-shrink Polyolefin Sleeve			
094	4.62	2.03	1.19
125	5.97	2.79	1.57
187	8.51	3.81	2.39
250	11.15	5.46	3.18
375	16.38	8.13	4.78
500	21.62	11.43	6.35
750	31.75	17.78	9.53
1000	42.16	24.13	12.70
1500	61.80	36.83	19.05
2000	80.39	49.53	25.40

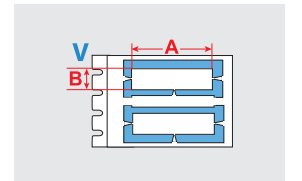
B-345 PermaSleeve HT high temperature PVDF wire marking sleeves

High temperature, low outgassing. 2:1 Shrink Ratio

- ▶ A 2:1 shrink ratio wire marker sleeve specifically designed for high temperature and low vacuum outgassing applications
- ▶ Made from irradiated high-temp Polyvinylidene Fluoride (PVDF) heat shrink tubing
- ▶ Fade-resistant and flame-retardant



Diagram	Order Reference	Colour	Label Width A (mm)	Label Height B (mm)	Wire Diameter Range (mm)	Vertical Repeat D (mm)	Labels per Roll	Printer Ribbon Series
B-345: High Temperature Heat-shrink Polyvinylidene Fluoride								
V	B33D-94-2-345	White	50.80	4.62	0.80 mm - 2.03 mm	12.70	1000	B30-R6000
V	B33D-125-2-345	White	50.80	5.97	1.57 mm - 2.79 mm	12.70	1000	B30-R6000
V	B33D-187-2-345	White	50.80	8.51	2.39 mm - 3.81 mm	15.88	750	B30-R6000
V	B33D-250-2-345	White	50.80	11.15	3.18 mm - 5.46 mm	19.05	500	B30-R6000
V	B33D-375-2-345	White	50.80	16.38	4.75 mm - 8.13 mm	25.40	500	B30-R6000
V	B33D-500-2-345	White	50.80	21.62	6.35 mm - 11.43 mm	31.75	350	B30-R6000
V	B33D-750-2-345	White	50.80	31.75	9.53 mm - 17.78 mm	41.28	250	B30-R6000



How to read your PermaSleeve order reference

Example order reference:

B33D - 187 - 2 - BK - 4
 Product Diameter Width Colour Pieces
 Optional

Product type B33 = Single-sided Printing B33D = Double-sided Printing	Sleeve width 2 = 50.80mm
Sleeve diameter 094 = 3/32" size fits wire diameter 0.58mm - 2.03mm 125 = 1/8" size fits wire diameter 1.17mm - 2.79mm 187 = 3/16" size fits wire diameter 1.57mm - 3.81mm 250 = 1/4" size fits wire diameter 2.39mm - 5.46mm 375 = 3/8" size fits wire diameter 3.18mm - 8.13mm 500 = 1/2" size fits wire diameter 4.75mm - 11.43mm 750 = 3/4" size fits wire diameter 6.35mm - 17.78mm 1000 = 1" size fits wire diameter 9.53mm - 24.13mm 1500 = 1 1/2" size fits wire diameter 12.7mm - 36.83mm	Sleeve Colour BK = Black WT = White YL = Yellow
Optional: Pieces per sleeve While 1 marker per sleeve is standard, the sleeve can be split into multiple pieces. Example: B33-1500-2-342-2 This "2" means that this 50.80mm sleeve is slit into two 25.40mm pieces	

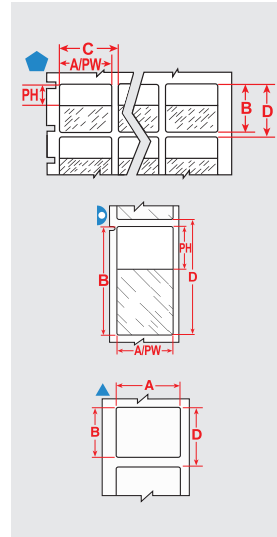


Self-laminating wire & cable markers

Brady's most popular wire marker

- Features white printable area with clear "tail" that wraps around marker to protect text
- Superior resistance to abrasion, handling, solvents, water, oil and dirt
- B-427 uses a permanent acrylic adhesive designed specifically for tightly curved surfaces
- B-417 offers an extra-strong permanent adhesive acrylic adhesive ideal for small-gauge wires

Diagram	Order Reference	Colour	Label Width A (mm)	Label Height B (mm)	Printable Area Height PH (mm)	Wire Diameter Range (mm)	Vertical Repeat D (mm)	Labels per Roll	Printer Ribbon Series
B-417: Self-laminating Vinyl									
◆	B33-80-417	White	12.70	19.05	9.53	2.54 mm - 3.05 mm	24.13	2500	B30-R4300
◆	B33-114-417	White	12.70	31.75	12.70	3.05 mm - 6.10 mm	34.93	4000	B30-R4300
◆	B33-8-417	White	12.70	36.50	12.70	3.81 mm - 8.38 mm	41.28	5000	B30-R4300
◆	B33-56-417	White	19.05	23.80	9.53	2.29 mm - 4.57 mm	28.58	5000	B30-R4300
◆	B33-73-417	White	19.05	44.45	12.70	5.59 mm - 11.43 mm	47.63	3500	B30-R4300
◆	B33-116-417	White	25.40	25.40	9.53	2.54 mm - 5.08 mm	28.58	2500	B30-R4300
◆	B33-117-417	White	25.40	31.75	12.70	3.05 mm - 6.10 mm	34.93	2000	B30-R4300
◆	B33-9-417	White	25.40	36.50	12.70	3.81 mm - 7.62 mm	41.28	2500	B30-R4300
◆	B33-75-417	White	25.40	57.15	19.05	6.60 mm - 12.45 mm	60.33	1400	B30-R4300
◆	B33-10-417	White	25.40	95.25	25.40	11.18 mm - 22.35 mm	101.60	1200	B30-R4300
◆	B33-81-417	White	25.40	152.40	38.10	18.29 mm - 36.32 mm	157.15	500	B30-R4300
▷	B33-119-417	White	38.10	38.10	12.70	3.81 mm - 8.38 mm	41.28	1000	B30-R4300
▷	B33-27-417	White	50.80	95.25	25.40	11.43 mm - 16.15 mm	101.60	400	B30-R4300
▷	B33-26-417	White	63.50	57.15	19.05	6.10 mm - 12.19 mm	61.93	500	B30-R4300
B-427: Self-laminating Vinyl									
◆	B33-8-427	White	12.70	36.50	12.70	3.81 mm - 7.62 mm	41.30	5000	B30-R4300
◆	B33-80-427	White	12.70	19.05	9.53	2.54 mm - 3.05 mm	24.13	2500	B30-R4300
◆	B33-113-427	White	12.70	25.40	9.53	2.54 mm - 5.08 mm	28.58	2500	B30-R4300
◆	B33-114-427	White	12.70	31.75	12.70	3.81 mm - 6.10 mm	34.93	4000	B30-R4300
◆	B33-73-427	White	19.05	44.45	12.70	5.08 mm - 10.16 mm	47.60	3500	B30-R4300
◆	B33-56-427	White	19.05	23.80	9.53	2.29 mm - 4.57 mm	28.58	5000	B30-R4300
◆	B33-74-427	White	20.32	36.50	12.70	3.81 mm - 7.62 mm	41.30	4000	B30-R4300
◆	B33-115-427	White	25.40	19.05	9.53	2.54 mm - 3.05 mm	21.59	2500	B30-R4300
▷	B33-131-427	White	25.40	66.68	25.40	6.60 mm - 13.21 mm	28.58	1500	B30-R4300
◆	B33-9-427	White	25.40	36.50	12.70	3.81 mm - 7.62 mm	41.30	2500	B30-R4300
◆	B33-81-427	White	25.40	152.40	38.10	18.29 mm - 36.32 mm	157.10	500	B30-R4300
◆	B33-75-427	White	25.40	57.15	19.05	6.10 mm - 12.19 mm	60.30	1400	B30-R4300
◆	B33-10-427	White	25.40	95.25	25.40	11.18 mm - 22.35 mm	101.60	1200	B30-R4300
◆	B33-116-427	White	25.40	25.40	9.53	2.54 mm - 5.08 mm	28.58	2500	B30-R4300
◆	B33-117-427	White	25.40	31.75	12.70	3.05 mm - 6.10 mm	34.93	2000	B30-R4300
◆	B33-211-427	White	25.40	25.40	9.65	2.70 mm - 5.10 mm	32.13	3000	B30-R4300
◆	B33-311-427	White	25.40	31.75	12.70	3.40 mm - 6.10 mm	37.72	3000	B30-R4300
◆	B33-511-427	White	25.40	63.50	19.05	6.70 mm - 14.20 mm	70.64	1500	B30-R4300
▷	B33-272-427	White	38.10	57.15	19.05	6.10 mm - 12.19 mm	63.50	700	B30-R4300
▷	B33-119-427	White	38.10	38.10	12.70	4.06 mm - 8.13 mm	44.45	1000	B30-R4300
▲	B33-135-427AW	White	38.10	19.05	19.05	-	22.23	1500	B30-R4300
▷	B33-118-427	White	38.10	25.40	9.53	2.54 mm - 5.08 mm	28.58	1250	B30-R4300

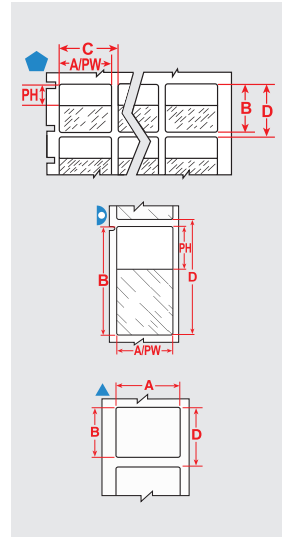


Self-laminating wire & cable markers (continued)

Brady's most popular wire marker



Diagram	Order Reference	Colour	Label Width A (mm)	Label Height B (mm)	Printable Area Height PH (mm)	Wire Diameter Range (mm)	Vertical Repeat D (mm)	Labels per Roll	Printer Ribbon Series
◆	B33-517-427	White	38.10	63.50	19.05	6.70 mm - 14.20 mm	69.85	1000	B30-R4300
▷	B33-273-427	White	44.45	57.15	19.05	6.10 mm - 12.19 mm	63.50	500	B30-R4300
▷	B33-121-427	White	44.45	38.10	12.70	4.06 mm - 8.13 mm	44.45	1000	B30-R4300
▷	B33-120-427	White	44.45	25.40	9.53	2.69 mm - 5.11 mm	28.58	1250	B30-R4300
▷	B33-82-427	White	50.80	152.40	38.10	18.29 mm - 36.32 mm	157.15	200	B30-R4300
▲	B33-137-427AW	White	50.80	25.40	25.40	-	28.58	1500	B30-R4300
▷	B33-27-427	White	50.80	95.25	25.40	11.18 mm - 22.35 mm	101.60	400	B30-R4300
▲	B33-640-427AW	White	55.88	38.10	-	-	45.08	1500	B30-R4300
▷	B33-26-427	White	63.50	57.15	19.05	6.10 mm - 12.19 mm	61.90	500	B30-R4300
▲	B33-648-427AW	White	66.68	25.40	-	-	32.38	1500	B30-R4300



How to choose the right size Self-Laminating marker for your wire or cable

If you know the outside diameter or circumference of your wire/cable, you can easily determine the correct total label length and white print area height by using the formula below

Formula for total marker wrap (incl clear tail): ensures 1.5 times wrap around wire—choose longer length than 1.5 if more wrapping is desired

- **Step 1:** (wire outside dia) x (3.142) = wire circumference
- **Step 2:** (circumference) x (1.5) = target label length "B in part number charts"

Formula for white print area height can also be used to assist in managing if or how far the white print area height "F will wrap or if it overlaps itself—1.0 will deliver full wrap with no overlap

- **Step 1:** (wire outside dia) x (3.142) = wire circumference
- **Step 2:** (circumference) x (1.0) = target print area height "F in part number chart that will not overlap itself"

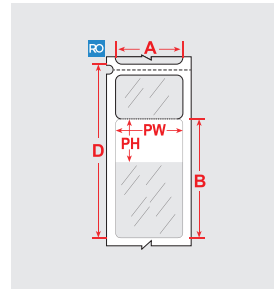


B-427 rotating self-laminating labels

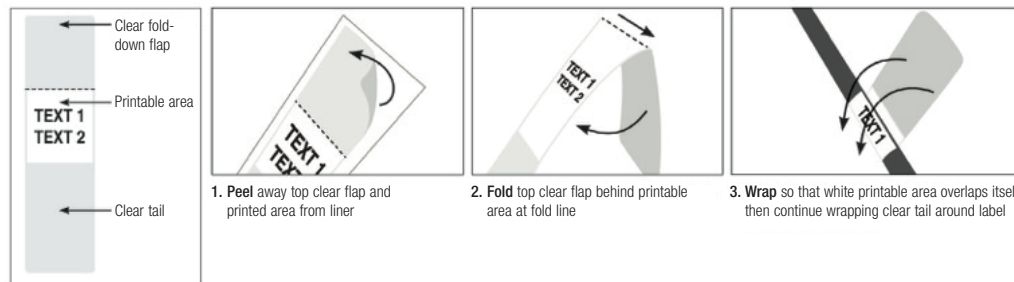
Legible from any angle: identify cables faster

- ▶ The B-427 self-laminating Rotating Label version can increase the speed of cable identification because its print can be read from any angle.
- ▶ The label can be rotated around a cable thanks to a non-adhesive printable zone and a translucent, self-adhesive laminate that is wrapped around a cable.

Diagram	Order Reference	Colour	Label Width A (mm)	Label Height B (mm)	Printable Area PH (mm)	Wire Diameter Range (mm)	Vertical Repeat D (mm)	Labels per Roll	Printer Ribbon Series
B-427: Self-laminating Vinyl									
	B33RO-292-427	White	12.70	44.45	17.78	2.69 mm - 5.66 mm	65.41	1500	R4300
	B33RO-293-427	White	12.70	69.85	27.94	3.99 mm - 8.89 mm	100.97	900	R4300
	B33RO-294-427	White	25.40	44.45	17.78	2.69 mm - 5.66 mm	65.41	1000	R4300
	B33RO-295-427	White	25.40	69.85	27.94	3.99 mm - 8.89 mm	100.97	700	R4300
	B33RO-296-427	White	25.40	79.38	31.75	4.39 mm - 10.11 mm	114.30	600	R4300
	B33RO-297-427	White	25.40	30.48	12.70	2.01 mm - 4.04 mm	46.36	600	R4300
	B33RO-299-427	White	50.80	79.38	31.75	4.39 mm - 10.11 mm	114.30	250	R4300



Rotating self-laminating wrap application:



LEARN MORE ABOUT ROTATING LABELS

B-483 QuickFlag tapered wire and cable flag labels

One-sided labels

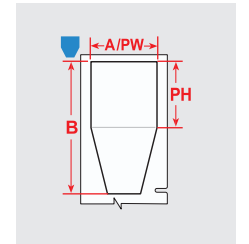
- ▶ Quickly flag wires and cables with the B-483 QuickFlag™ label material, featuring a tapered design to prevent mismatched edges and make flag installation much faster.



WATCH THE QUICKFLAG VIDEO



Diagram	Order Reference	Colour	Label Width A (mm)	Label Height B (mm)	Printable Area Height PH (mm)	Printable Area Width PW (mm)	Labels per Roll
B-483A: Polyester							
	B33-360-483	White	25.40	50.80	25.40	25.40	1500
	B33-361-483	White	48.26	50.80	25.40	48.26	1500



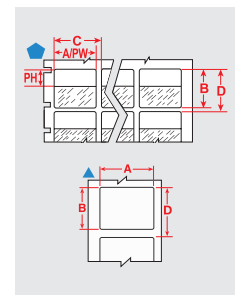
B-498 Repositionable vinyl cloth wire & cable markers

Holds strong but can be removed cleanly and re-applied

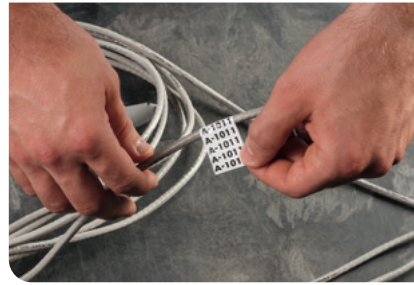
- ▶ A vinyl cloth label for marking wires, cables and inside-panel components
- ▶ Highly unique adhesive and cloth construction gives excellent holding power and still allows for clean removal and re-application
- ▶ Ideal choice for marking both ends of a wire that you may need to cut shorted before final termination



Diagram	Order Reference	Colour	Label Width A (mm)	Label Height B (mm)	Vertical Repeat D (mm)	Labels per Roll	Printer Ribbon Series
B-498: Vinyl Cloth							
	B33-1-498	White	19.05	6.35	8.89	5000	B30-R6200
	B33-254-498	White	19.05	19.05	21.59	1000	B30-R6200
	B33-325-498	White	25.40	63.50	66.68	700	B30-R6200
	B33-326-498	White	25.40	101.60	104.78	450	B30-R6200
	B33-327-498	White	38.10	101.60	104.78	450	B30-R6200
	B33-328-498	White	38.10	152.40	155.58	300	B30-R6200
	B33-5-498	White	25.40	12.70	15.24	5000	B30-R6200
	B33-68-498	White	12.70	19.05	21.59	5000	B30-R6200
	B33-87-498	White	12.70	36.50	39.70	2500	B30-R6200
	B33-88-498	White	25.40	19.05	22.23	2500	B30-R6200
	B33-89-498	White	25.40	36.50	39.70	2300	B30-R6200
	B33-90-498	White	6.35	36.50	39.70	2500	B30-R6200
	B33-91-498	White	19.05	23.80	27.00	2500	B30-R6200
	B33-95-498	White	20.32	36.50	39.70	2300	B30-R6200



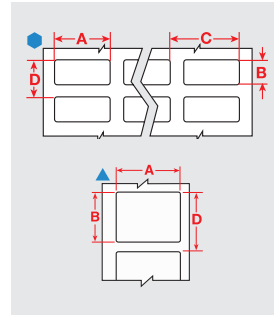
WIRE AND CABLE IDENTIFICATION - DATACOM/ELECTRICAL



B-499 Wire & cable markers

This nylon cloth material has superb adhesive power, making it a flexible all surfaces solution

Diagram	Order Reference	Colour	Label Width A (mm)	Label Height B (mm)	Vertical Repeat D (mm)	Labels per Roll	Printer Ribbon Series
B-499: Nylon Cloth							
▲	B33-125-499	White	22.86	12.70	15.24	1500	B30-R4300
●	B33-1-499	White	19.05	6.35	8.89	10000	B30-R6000
▲	B33-151-499	White	50.80	6.35	8.89	1500	B30-R4300
●	B33-152-499	White	25.40	9.53	12.07	1500	B30-R4300
▲	B33-254-499	White	19.05	19.05	21.59	1000	B30-R6000
●	B33-325-499	White	25.40	63.50	66.68	700	B30-R6000
●	B33-326-499	White	25.40	101.60	104.78	450	B30-R6000
●	B33-327-499	White	38.10	101.60	104.78	450	B30-R6000
●	B33-328-499	White	38.10	152.40	155.58	300	B30-R6000
●	B33-5-499	White	25.40	12.70	15.24	5000	B30-R6000
●	B33-611-499	White	12.70	25.40	28.40	3000	B30-R6000
▲	B33-620-499	White	12.70	25.40	28.40	1000	B30-R6000
●	B33-621-499	White	25.40	36.50	39.50	3000	B30-R6000
●	B33-625-499	White	25.40	66.68	69.68	1500	B30-R6000
▲	B33-659-499	White	25.40	12.45	15.40	1000	B30-R6000
●	B33-87-499	White	12.70	36.50	39.67	2500	B30-R6000
●	B33-88-499	White	25.40	19.05	22.23	2500	B30-R6000
●	B33-89-499	White	25.40	36.50	39.67	2300	B30-R6000
●	B33-90-499	White	6.35	36.50	39.67	2500	B30-R6000
●	B33-91-499	White	19.05	23.80	26.97	2500	B30-R6000



WIRE AND CABLE IDENTIFICATION - DATACOM/ELECTRICAL

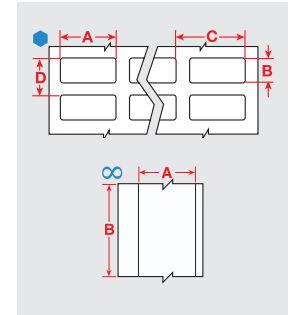
B-472 Polyimide high temp adhesive wire & cable labels

Topcoated Polyimide label for wire & cable marking where high temperature and self-extinguishing features are required

- Heavy duty performance with excellent resistance to water, oil and other fluids



Diagram	Order Reference	Colour	Label Width A (mm)	Label Height B (mm)	Label Length B (m)	Vertical Repeat D (mm)	Labels per Roll	Printer Ribbon Series
B-472: Polyimide								
●	B33-11-472	White	6.35	6.35		9.53	15000	B30-R4300
●	B33-1-472	White	19.05	6.35		8.89	5000	B30-R4300
●	B33-2-472	White	22.86	6.35		8.89	5000	B30-R4300
●	B33-29-472	White	31.75	9.53		12.07	5000	B30-R4300
●	B33-5-472	White	25.40	12.70		15.24	5000	B30-R4300
●	B33-5-472-YL	Yellow	25.40	12.70		15.24	5000	B30-R4300
∞	B33C-1000-472	White	25.40	–	25.91 m	–	1	B30-R4300
∞	B33C-1000-472YL	Yellow	25.40	–	25.91 m	–	1	B30-R4300
∞	B33C-1500-472	White	38.10	–	25.91 m	–	1	B30-R4300
∞	B33C-1500-472YL	Yellow	38.10	–	25.91 m	–	1	B30-R4300
∞	B33C-2000-472	White	50.80	–	25.91 m	–	1	B30-R4300
∞	B33C-2000-472YL	Yellow	50.80	–	25.91 m	–	1	B30-R4300
∞	B33C-3000-472	White	76.20	–	25.91 m	–	1	B30-R4300
∞	B33C-3000-472YL	Yellow	76.20	–	25.91 m	–	1	B30-R4300



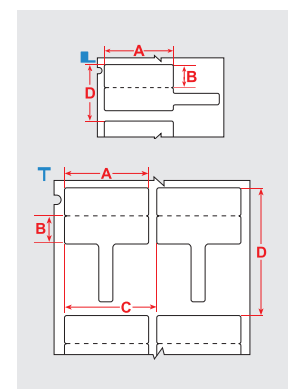
B-425 Fibre optic labels

Ideal for marking fibre optic cables

- Allows you to handle and view labels without touching the wires



Diagram	Order Reference	Colour	Label Width A (mm)	Label Height B (mm)	Max. Wire Diameter (mm)	Vertical Repeat D (mm)	Labels per Roll	Printer Ribbon Series
B-425A: Polypropylene								
L	B33FP-01-425	White	30.00	20.00	5.40	26.03	1000	B30-R4300
T	B33FT-01-425	White	30.00	20.00	5.40	46.03	1000	B30-R4300



WIRE AND CABLE IDENTIFICATION - DATACOM/ELECTRICAL

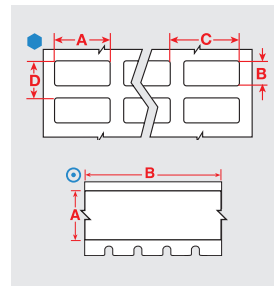


B-437 Tedlar adhesive wire & cable labels

Topcoated Polyvinylfluoride label for wire & cable marking where high temperature and self-extinguishing features are required

- ▶ Heavy duty performance with excellent resistance to water, oil and other fluids
- ▶ Meets MIL-M-87958 Standard

Diagram	Order Reference	Colour	Label Width A (mm)	Label Height B (mm)	Label Length B (m)	Wire Diameter Range (mm)	Vertical Repeat D (mm)	Labels per Roll	Printer Ribbon Series
B-437: Polyvinylfluoride									
●	B33-11-437	White	6.35	6.35	-	0.76 mm - 2.03 mm	9.53	15000	B30-R4300
●	B33-1-437	White	19.05	6.35	-	0.76 mm - 2.03 mm	8.89	5000	B30-R4300
●	B33-29-437	White	31.75	9.53	-	1.27 mm - 3.05 mm	12.07	5000	B30-R4300
●	B33-29-437YL	Yellow	31.75	9.53	-	1.27 mm - 3.05 mm	12.07	5000	B30-R4300
●	B33-5-437	White	25.40	12.70	-	1.52 mm - 4.06 mm	15.19	5000	B30-R4300
●	B33-5-437YL	Yellow	25.40	12.70	-	1.52 mm - 4.06 mm	15.19	5000	B30-R4300
○	B33C-1000-437	White	25.40	-	25.91 m	-	-	1	B30-R4300
○	B33C-1000-437YL	Yellow	25.40	-	25.91 m	-	-	1	B30-R4300
○	B33C-1500-437	White	38.10	-	25.91 m	-	-	1	B30-R4300
○	B33C-2000-437	White	50.80	-	25.91 m	-	-	1	B30-R4300
○	B33C-2000-437YL	Yellow	50.80	-	25.91 m	-	-	1	B30-R4300
○	B33C-3000-437	White	76.20	-	25.91 m	-	-	1	B30-R4300
○	B30C-4000-437	White	101.60	-	45.72 m	-	-	1	B30-R4300

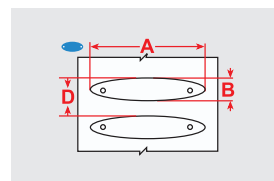


B-7599 Polyethylene tag

Rapido Wire Marking Tags

- ▶ Simply squeeze the edges of the material together, thread your wire through the holes and pull away the wire to release the marker.

Diagram	Order Reference	Colour	Tag Width A (mm)	Tag Height B (mm)	Hole Diameter C (mm)	Vertical Repeat D (mm)	Tags per Roll	Printer Ribbon Series
●	B33R-01-7599-YL	Yellow	23.00	5.20	3.90 x 2.40	8.39	2500	B30-R4300, B30-R6200
●	B33R-02-7599-YL	Yellow	23.00	5.20	4.90 x 3.50	8.39	2500	B30-R4300, B30-R6200
●	B33R-03-7599-YL	Yellow	25.00	5.70	5.90 x 4.20	8.89	2500	B30-R4300, B30-R6200



QuickSleeve handheld sleeve applicator

The QuickSleeve Handheld Sleeve Applicator is an intuitive multi-tool designed to help you quickly apply sleeves on to wires in three simple steps, just pick, slip and apply. This tool includes:

- ▶ Four specially designed slanted tubes sized for sleeve sizes 2.38 mm, 3.175 mm, 4.74 mm and 6.35 mm
- ▶ Built-in LED flashlight for use in low-lit conditions
- ▶ Terminal block sized screwdriver

Article No.	Order Reference	Description	Quantity / Package
149474	QS	QuickSleeve Handheld Sleeve Applicator	1



WIRE AND CABLE IDENTIFICATION - DATACOM/ELECTRICAL

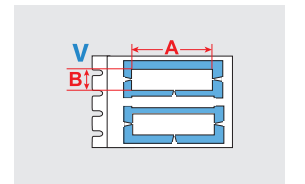
B-7641 PermaSleeve low smoke zero halogen wire marking sleeves

Permanent heat shrink wire identification

- ▶ A 2:1 double-sided printable heat-shrink Polyolefin wire marker sleeve designed for wire identification and insulation purposes
- ▶ Contains no added halogens, offers excellent flame retardant characteristics combined with minimal smoke emission



Diagram	Order Reference	Colour	Label Width A (mm)	Label Height B (mm)	Wire Diameter Range (mm)	Vertical Repeat D (mm)	Labels per Roll	Printer Ribbon Series
B-7641: Heat-shrink Polyolefin								
V	B33D-94-2-7641	White	50.80	4.62	1.19 mm - 2.03 mm	12.70	500	B30-R6600
V	B33D-125-2-7641	White	50.80	5.97	1.57 mm - 2.79 mm	12.70	500	B30-R6600
V	B33D-125-2-7641Y	Yellow	50.80	5.97	1.57 mm - 2.79 mm	12.70	500	B30-R6600
V	B33D-187-2-7641	White	50.80	8.51	2.39 mm - 3.81 mm	15.88	450	B30-R6600
V	B33D-187-2-7641Y	Yellow	50.80	8.51	2.39 mm - 3.81 mm	15.88	450	B30-R6600
V	B33D-250-2-7641	White	50.80	11.15	3.18 mm - 5.46 mm	19.05	400	B30-R6600
V	B33D-250-2-7641Y	Yellow	50.80	11.15	3.18 mm - 5.46 mm	19.05	400	B30-R6600
V	B33D-375-2-7641	White	50.80	16.38	4.78 mm - 8.13 mm	25.40	250	B30-R6600
V	B33D-375-2-7641Y	Yellow	50.80	16.38	4.78 mm - 8.13 mm	25.40	250	B30-R6600
V	B33D-500-2-7641	White	50.80	21.62	6.35 mm - 11.43 mm	31.75	225	B30-R6600
V	B33D-500-2-7641Y	Yellow	50.80	21.62	6.35 mm - 11.43 mm	31.75	225	B30-R6600
V	B33D-750-2-7641Y	Yellow	50.80	31.75	9.53 mm - 17.78 mm	41.28	150	B30-R6600
V	B33D-1000-2-7641Y	Yellow	50.80	42.16	12.70 mm - 24.13 mm	50.80	150	B30-R6600
V	B33D-1500-2-7641	White	50.80	61.80	19.05 mm - 36.83 mm	76.20	50	B30-R6600
V	B33D-1500-2-7641Y	Yellow	50.80	61.80	19.05 mm - 36.83 mm	76.20	50	B30-R6600



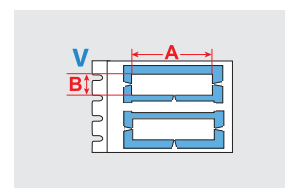
B-7642 PermaSleeve HX polyolefin wire marking sleeves

Military/Industrial grade. 2:1 Shrink ratio

- ▶ A 2:1 heat shrinkable wire marker sleeve that fits snugly around wires
- ▶ Flame-retardant and high-temp rated but not as high temp as B-345 "HT" Sleeves



Diagram	Order Reference	Colour	Label Width A (mm)	Label Height B (mm)	Wire Diameter Range (mm)	Vertical Repeat D (mm)	Labels per Roll	Printer Ribbon Series
B-7642: Heat-shrink Polyolefin								
V	B33-94-2-7642	White	50.80	4.62	1.19 mm - 2.03 mm	12.70	500	B30-R4300
V	B33D-94-2-7642	White	50.80	4.62	1.19 mm - 2.03 mm	12.70	500	B30-R4300
V	B33-125-2-7642	White	50.80	5.97	1.57 mm - 2.79 mm	12.70	500	B30-R4300
V	B33D-125-2-7642	White	50.80	5.97	1.57 mm - 2.79 mm	12.70	500	B30-R4300
V	B33-187-2-7642	White	50.80	8.51	2.39 mm - 3.81 mm	15.88	450	B30-R4300
V	B33-250-2-7642	White	50.80	11.15	3.18 mm - 5.46 mm	19.05	400	B30-R4300
V	B33-375-2-7642	White	50.80	16.38	4.78 mm - 8.13 mm	25.40	250	B30-R4300
V	B33-1000-2-7642	White	50.80	42.16	12.70 mm - 24.13 mm	50.80	150	B30-R4300
V	B33D-1000-2-7642	White	50.80	42.16	12.70 mm - 24.13 mm	50.80	150	B30-R4300
V	B33-1500-2-7642	White	50.80	61.80	19.05 mm - 36.83 mm	76.20	50	B30-R4300
V	B33D-1500-2-7642	White	50.80	61.80	19.05 mm - 36.83 mm	76.20	50	B30-R4300



WIRE AND CABLE IDENTIFICATION - DATACOM/ELECTRICAL

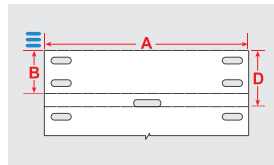


B-348 Mass transit cable tag

Fully compliant mass transit tag

- Complies with minimal smoke and halogen emission requirements of the most strict underground norms for High Performance vehicles.
- This tag has excellent UV resency.

Diagram	Order Reference	Colour	Tag Width A (mm)	Tag Height B (mm)	Vertical Repeat D (mm)	Tags per Roll	Printer Ribbon Series
	B33-6010-348-WT	White	60.00	10.00	15.08	750	B30-R6000
	B33-6010-348-YL	Yellow	60.00	10.00	15.08	750	B30-R6000
	B33-7510-348-WT	White	75.00	10.00	15.08	750	B30-R6000
	B33-7510-348-YL	Yellow	75.00	10.00	15.08	750	B30-R6000
	B33-7515-348-WT	White	75.00	15.00	20.02	500	B30-R6000
	B33-7515-348-YL	Yellow	75.00	15.00	20.02	500	B30-R6000
	B33-7525-348-WT	White	75.00	25.00	30.16	250	B30-R6000



B-7697 Rigid DuraSleeve wire marking inserts

DuraSleeve tag carriers are produced in transparent PVC. The special shape of the carrier allows it to adapt to cables of various diameters. There are several sizes of carriers which cater for cables with external diameters from 1.30 mm up to 15 mm.

- Temperature range: -40 °C to 60 °C
- Material: PVC

Please contact your local Brady representative to identify and select the most appropriate carrier for your individual application.

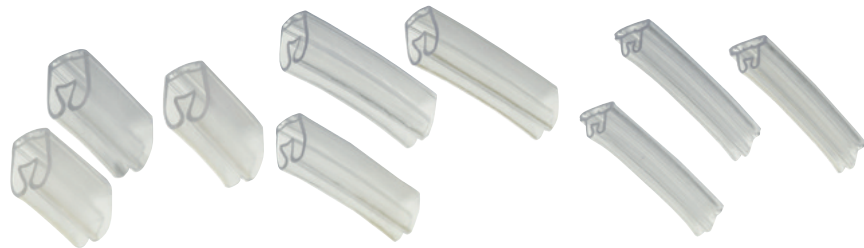
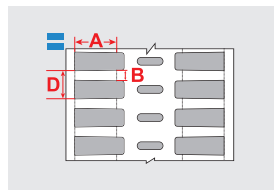


Diagram	Order Reference	Label Width A (mm)	Label Height B (mm)	Vertical Repeat D (mm)	Labels per Roll	Printer Ribbon Series
White						
	B33-10x4.4-7697-WT	10.00	4.40	11.46	2500	B30-R4300, B30-R6200
	B33-12x4.4-7697-WT	12.00	4.40	11.46	2500	B30-R4300, B30-R6200
	B33-16x4.4-7697-WT	16.00	4.40	11.46	2500	B30-R4300, B30-R6200
	B33-23x4.4-7697-WT	23.00	4.40	11.46	2500	B30-R4300, B30-R6200
	B33-30x4.4-7697-WT	30.63	4.40	11.46	2500	B30-R4300, B30-R6200



WIRE AND CABLE IDENTIFICATION - DATACOM/ELECTRICAL

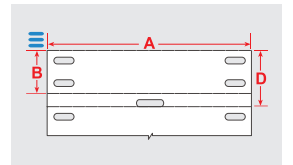
B-7598 Polyester cable tag

Durable outdoor cable identification

- The B-7598 polyester cable identification tag has been developed to keep cables identified in outdoor environments.
- Offers up to 10 year outdoor legibility and durability.
- Available in 7 colours.



Diagram	Order Reference	Colour	Tag Width A (mm)	Tag Height B (mm)	Vertical Repeat D (mm)	Tags per Roll	Printer Ribbon Series
	B33-60x10-7598-BK	Black	60.00	10.00	15.08	1000	B30-R4400-WT
	B33-60x10-7598-BL	Blue	60.00	10.00	15.08	1000	B30-R6000
	B33-60x10-7598-GN	Green	60.00	10.00	15.08	1000	B30-R6000
	B33-60x10-7598-RD	Red	60.00	10.00	15.08	1000	B30-R6000
	B33-60x10-7598-SV	Silver	60.00	10.00	15.08	1000	B30-R6000
	B33-60x10-7598-WT	White	60.00	10.00	15.08	1000	B30-R6000
	B33-60x10-7598-YL	Yellow	60.00	10.00	15.08	1000	B30-R6000
	B33-75x10-7598-BK	Black	75.00	10.00	15.08	1000	B30-R4400-WT
	B33-75x10-7598-BL	Blue	75.00	10.00	15.08	1000	B30-R6000
	B33-75x10-7598-GN	Green	75.00	10.00	15.08	1000	B30-R6000
	B33-75x10-7598-RD	Red	75.00	10.00	15.08	1000	B30-R6000
	B33-75x10-7598-SV	Silver	75.00	10.00	15.08	1000	B30-R6000
	B33-75x10-7598-WT	White	75.00	10.00	15.08	1000	B30-R6000
	B33-75x10-7598-YL	Yellow	75.00	10.00	15.08	1000	B30-R6000
	B33-75x15-7598-BK	Black	75.00	15.00	20.02	1000	B30-R4400-WT
	B33-75x15-7598-BL	Blue	75.00	15.00	20.02	1000	B30-R6000
	B33-75x15-7598-GN	Green	75.00	15.00	20.02	1000	B30-R6000
	B33-75x15-7598-RD	Red	75.00	15.00	20.02	1000	B30-R6000
	B33-75x15-7598-WT	White	75.00	15.00	20.02	1000	B30-R6000
	B33-75x15-7598-YL	Yellow	75.00	15.00	20.02	1000	B30-R6000
	B33-75x25-7598-BK	Black	75.00	25.00	30.16	500	B30-R4400-WT
	B33-75x25-7598-GN	Green	75.00	25.00	30.16	500	B30-R6000
	B33-75x25-7598-RD	Red	75.00	25.00	30.16	500	B30-R6000
	B33-75x25-7598-WT	White	75.00	25.00	30.16	500	B30-R6000
	B33-75x25-7598-YL	Yellow	75.00	25.00	30.16	500	B30-R6000

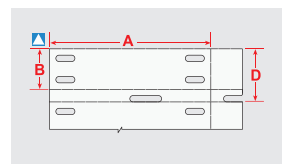


B-7597 Tear resistant tags

This tag can be used for a variety of applications including identification of multi-conductor cables, inventory and equipment



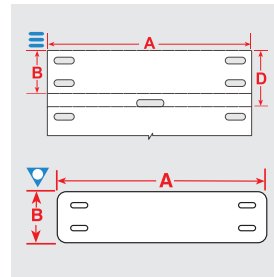
Diagram	Order Reference	Colour	Tag Width A (mm)	Tag Height B (mm)	Vertical Repeat D (mm)	Tags per Roll	Printer Ribbon Series
	B33-7597W-2050	White	50.80	12.70	16.72	2000	B30-R4300





B-7643 Halogen-free cable tag
Easily print cable tags wherever you are

Diagram	Order Reference	Colour	Label Width A (mm)	Label Height B (mm)	Vertical Repeat D (mm)	Labels per Roll	Printer Ribbon Series
B-7643: Thermoplastic Polyether Polyurethane							
▽	B33-6010-7643-WT	White	60.00	10.00	-	500	B30-R6000
▽	B33-6010-7643-YL	Yellow	60.00	10.00	-	500	B30-R6000
▽	B33-7510-7643-WT	White	75.00	10.00	-	500	B30-R6000
▽	B33-7510-7643-YL	Yellow	75.00	10.00	-	500	B30-R6000
▽	B33-7515-7643-WT	White	75.00	15.00	-	500	B30-R6000
▽	B33-7515-7643-YL	Yellow	75.00	15.00	-	500	B30-R6000
▽	B33-7525-7643-WT	White	75.00	25.00	-	250	B30-R6000
▽	B33-7525-7643-YL	Yellow	75.00	25.00	-	250	B30-R6000
≡	B33-60x10-7643-WT	White	60.00	10.00	15.08	750	B30-R6000
≡	B33-60x10-7643-YL	Yellow	60.00	10.00	15.08	750	B30-R6000
≡	B33-60x10-7643-GN	Green	60.00	10.00	15.08	750	B30-R6000
≡	B33-60x10-7643-RD	Red	60.00	10.00	15.08	750	B30-R6000
≡	B33-60x10-7643-OR	Orange	60.00	10.00	15.08	750	B30-R6000
≡	B33-60x10-7643-BK	Black	60.00	10.00	15.08	750	B30-R4400-WT
≡	B33-60x10-7643-BL	Blue	60.00	10.00	15.08	750	B30-R6000
≡	B33-75x10-7643-WT	White	75.00	10.00	15.08	750	B30-R6000
≡	B33-75x10-7643-YL	Yellow	75.00	10.00	15.08	750	B30-R6000
≡	B33-75x10-7643-GN	Green	75.00	10.00	15.08	750	B30-R6000
≡	B33-75x10-7643-RD	Red	75.00	10.00	15.08	750	B30-R6000
≡	B33-75x10-7643-OR	Orange	75.00	10.00	15.08	750	B30-R6000
≡	B33-75x10-7643-BK	Black	75.00	10.00	15.08	750	B30-R4400-WT
≡	B33-75x10-7643-BL	Blue	75.00	10.00	15.08	750	B30-R6000
≡	B33-75x15-7643-WT	White	75.00	15.00	20.02	500	B30-R6000
≡	B33-75x15-7643-YL	Yellow	75.00	15.00	20.02	500	B30-R6000
≡	B33-75x15-7643-GN	Green	75.00	15.00	20.02	500	B30-R6000
≡	B33-75x15-7643-RD	Red	75.00	15.00	20.02	500	B30-R6000
≡	B33-75x15-7643-OR	Orange	75.00	15.00	20.02	500	B30-R6000
≡	B33-75x15-7643-BK	Black	75.00	15.00	20.02	500	B30-R4400-WT
≡	B33-75x15-7643-BL	Blue	75.00	15.00	20.02	500	B30-R6000
≡	B33-75x25-7643-WT	White	75.00	25.00	30.16	250	B30-R6000
≡	B33-75x25-7643-YL	Yellow	75.00	25.00	30.16	250	B30-R6000
≡	B33-75x25-7643-GN	Green	75.00	25.00	30.16	250	B30-R6000
≡	B33-75x25-7643-RD	Red	75.00	25.00	30.16	250	B30-R6000
≡	B33-75x25-7643-OR	Orange	75.00	25.00	30.16	250	B30-R6000
≡	B33-75x25-7643-BK	Black	75.00	25.00	30.16	250	B30-R4400-WT
≡	B33-75x25-7643-BL	Blue	75.00	25.00	30.16	250	B30-R6000



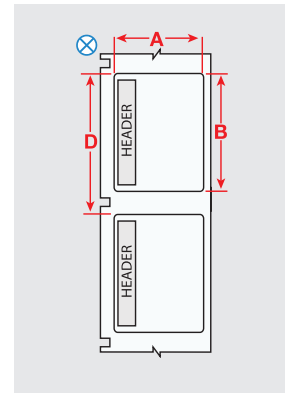
Pre-printed Pre-cut blank sign headers

For creating Arc Flash and safety warning labels in seconds

- ▶ Allows the printer to create multi-colour signs fast - in a single print pass
- ▶ B-595 Indoor/Outdoor grade material conforms to rough, irregular and "difficult to adhere to" surfaces
- ▶ B-483 uses an aggressive adhesive specifically designed for powder coated surfaces



Diagram	Order Reference	Legend	Label Width A (mm)	Label Height B (mm)	Vertical Repeat D (mm)	Labels per Roll	Printer Ribbon Series
B-483A: Polyester							
⊗	B33-184-483-ANSIWA	WARNING	76.20	76.20	82.55	500	B30-R6000
⊗	B33-184-483-ANSIDA	DANGER	76.20	76.20	82.55	500	B30-R6000
⊗	B33-161-483-ANSIDA	DANGER	101.60	101.60	107.95	370	B30-R6000
⊗	B33-161-483-ANSIWA	WARNING	101.60	101.60	107.95	370	B30-R6000
B-595: Vinyl							
⊗	B30-241-595-ANSIDA	DANGER	76.20	57.15	82.55	300	B30-R10000
⊗	B30-241-595-ANSICA	CAUTION	76.20	57.15	82.55	300	B30-R10000
⊗	B30-241-595-ANSIWA	WARNING	76.20	57.15	82.55	300	B30-R10000
⊗	B30-241-595-ANSINO	NOTICE	76.20	57.15	82.55	300	B30-R10000
⊗	B30-241-595-OSHACA	CAUTION	76.20	57.15	82.55	300	B30-R10000
⊗	B30-25-595-ANSIDA	DANGER	152.40	101.60	158.75	175	B30-R10000
⊗	B30-25-595-ANSICA	CAUTION	152.40	101.60	158.75	175	B30-R10000
⊗	B30-25-595-ANSIWA	WARNING	152.40	101.60	158.75	175	B30-R10000
⊗	B30-25-595-ANSINO	NOTICE	152.40	101.60	158.75	175	B30-R10000
⊗	B30-25-595-OSHADA	DANGER	152.40	101.60	158.75	175	B30-R10000
⊗	B30-25-595-OSHACA	CAUTION	152.40	101.60	158.75	175	B30-R10000



FACILITY AND SAFETY IDENTIFICATION

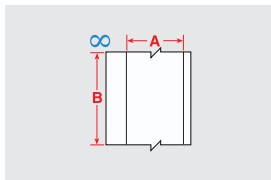


B-551 Non-adhesive tag stock

For safety, lockout and general purpose hanging tags

- ▶ Non-adhesive, polyester stock
- ▶ Hole punch available separately. Order reference: 020591
- ▶ Optional snap-in grommets available. Order Reference: 020596

Diagram	Order Reference	Colour	Label Width A (mm)	Label Height B (mm)	Labels per Roll	Printer Ribbon Series
B-551: Polyester						
∞	B30C-2500-551-WT	White	63.50	-	1	B30-R10000
∞	B30C-3250-551-WT	White	82.55	-	1	B30-R10000
∞	B30C-4250-551-WT	White	107.19	-	1	B30-R10000

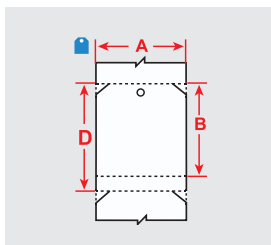


B-851 Non-adhesive pre-printed & pre-cut safety tags

Pre-printed and pre-cut to save you time

- ▶ Non-adhesive semi-rigid polyester card stock
- ▶ Tags are pre-cut with hole and chamfered corners
- ▶ Perforated between tags
- ▶ Snap-in plastic grommets available for extra strength around mounting hole. Order reference: 020596

Diagram	Order Reference	Legend	Label Width A (mm)	Label Height B (mm)	Vertical Repeat D (mm)	Labels per Roll	Printer Ribbon Series
B-851: Polyester							
Ⓜ	B30-255-851-ANSIDB	⚠ DANGER	82.55	146.05	158.75	100	B30-R10000
Ⓜ	B30-255-851-OSHADB	DANGER	82.55	146.05	158.75	100	B30-R10000
Ⓜ	B30-255-851-OSHADSF	DANGER	82.55	146.05	158.75	100	B30-R10000
Ⓜ	B30-255-851-ANSIDF	⚠ DANGER	82.55	146.05	158.75	100	B30-R10000
Ⓜ	B30-255-851-OSHADF	DANGER	82.55	146.05	158.75	100	B30-R10000
Ⓜ	B30-255-851-ANSIDA	⚠ DANGER	82.55	146.05	158.75	100	B30-R10000
Ⓜ	B30-255-851-OSHADA	DANGER	82.55	146.05	158.75	100	B30-R10000
Ⓜ	B30-255-851-ANSICA	⚠ CAUTION	82.55	146.05	158.75	100	B30-R10000



FACILITY AND SAFETY IDENTIFICATION

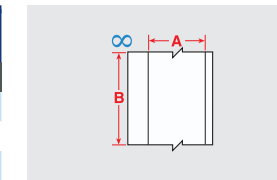
B-595 High performance indoor/outdoor vinyl

For general facility and safety identification: our best industrial vinyl yet

- ▶ Durable, low-shrink vinyl with our most aggressive adhesive
- ▶ Conforms to irregular, curved, rough and highly textured surfaces (painted cinder blocks, uneven wood, textured plastics, paper-jacketed pipes, powder-coated surfaces)
- ▶ Adheres to "difficult low-surface energy items (PVC piping, blow-moulded equipment cases, ABS plastics, recycled plastics)



Diagram	Order Reference	Colour	Label Width A (mm)	Label Length B (m)	Labels per Roll	Printer Ribbon Series
B-595: Vinyl						
∞	B30C-500-595-BK	Black	12.70	30.48	1	B30-R10000-WT
∞	B30C-500-595-BL	Blue	12.70	30.48	1	B30-R10000-WT
∞	B30C-500-595-BR	Brown	12.70	30.48	1	B30-R10000-WT
∞	B30C-500-595-GD	Gold	12.70	30.48	1	B30-R10000
∞	B30C-500-595-GN	Green	12.70	30.48	1	B30-R10000-WT
∞	B30C-500-595-GY	Grey	12.70	30.48	1	B30-R10000
∞	B30C-500-595-OR	Orange	12.70	30.48	1	B30-R10000
∞	B30C-500-595-PK	Pink	12.70	30.48	1	B30-R10000
∞	B30C-500-595-PL	Purple	12.70	30.48	1	B30-R10000-WT
∞	B30C-500-595-RD	Red	12.70	30.48	1	B30-R10000-WT
∞	B30C-500-595-CL	Transparent	12.70	30.48	1	B30-R10000
∞	B30C-500-595-WT	White	12.70	30.48	1	B30-R10000
∞	B30C-500-595-YL	Yellow	12.70	30.48	1	B30-R10000
∞	B30C-1125-595-BK	Black	28.58	30.48	1	B30-R10000-WT
∞	B30C-1125-595-BL	Blue	28.58	30.48	1	B30-R10000-WT
∞	B30C-1125-595-BR	Brown	28.58	30.48	1	B30-R10000-WT
∞	B30C-1125-595-GD	Gold	28.58	30.48	1	B30-R10000
∞	B30C-1125-595-GN	Green	28.58	30.48	1	B30-R10000-WT
∞	B30C-1125-595-GY	Grey	28.58	30.48	1	B30-R10000
∞	B30C-1125-595-OC	Ochre	28.58	30.48	1	B30-R10000
∞	B30C-1125-595-OR	Orange	28.58	30.48	1	B30-R10000
∞	B30C-1125-595-PK	Pink	28.58	30.48	1	B30-R10000
∞	B30C-1125-595-PL	Purple	28.58	30.48	1	B30-R10000-WT
∞	B30C-1125-595-RD	Red	28.58	30.48	1	B30-R10000-WT
∞	B30C-1125-595-CL	Transparent	28.58	30.48	1	B30-R10000
∞	B30C-1125-595-WT	White	28.58	30.48	1	B30-R10000
∞	B30C-1125-595-YL	Yellow	28.58	30.48	1	B30-R10000
∞	B30C-2250-595-BK	Black	57.15	30.48	1	B30-R10000-WT
∞	B30C-2250-595-BL	Blue	57.15	30.48	1	B30-R10000-WT
∞	B30C-2250-595-BR	Brown	57.15	30.48	1	B30-R10000-WT
∞	B30C-2250-595-GD	Gold	57.15	30.48	1	B30-R10000
∞	B30C-2250-595-GN	Green	57.15	30.48	1	B30-R10000-WT
∞	B30C-2250-595-GY	Grey	57.15	30.48	1	B30-R10000
∞	B30C-2250-595-OC	Ochre	57.15	30.48	1	B30-R10000
∞	B30C-2250-595-OR	Orange	57.15	30.48	1	B30-R10000
∞	B30C-2250-595-PK	Pink	57.15	30.48	1	B30-R10000
∞	B30C-2250-595-PL	Purple	57.15	30.48	1	B30-R10000-WT
∞	B30C-2250-595-RD	Red	57.15	30.48	1	B30-R10000-WT
∞	B30C-2250-595-CL	Transparent	57.15	30.48	1	B30-R10000
∞	B30C-2250-595-WT	White	57.15	30.48	1	B30-R10000
∞	B30C-2250-595-YL	Yellow	57.15	30.48	1	B30-R10000
∞	B30C-3000-595-WT	White	76.20	30.48	1	B30-R10000
∞	B30C-3000-595-YL	Yellow	76.20	30.48	1	B30-R10000
∞	B30C-4000-595-BK	Black	101.60	30.48	1	B30-R10000-WT
∞	B30C-4000-595-BL	Blue	101.60	30.48	1	B30-R10000-WT
∞	B30C-4000-595-BR	Brown	101.60	30.48	1	B30-R10000-WT
∞	B30C-4000-595-GD	Gold	101.60	30.48	1	B30-R10000
∞	B30C-4000-595-GN	Green	101.60	30.48	1	B30-R10000-WT



»

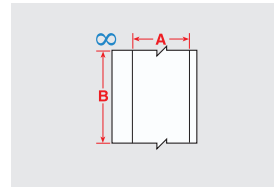
FACILITY AND SAFETY IDENTIFICATION



B-595 High performance indoor/outdoor vinyl (continued)

For general facility and safety identification: our best industrial vinyl yet

Diagram	Order Reference	Colour	Label Width A (mm)	Label Length B (m)	Labels per Roll	Printer Ribbon Series
∞	B30C-4000-595-GY	Grey	101.60	30.48	1	B30-R10000
∞	B30C-4000-595-LB	Light Blue	101.60	30.48	1	B30-R10000
∞	B30C-4000-595-OC	Ochre	101.60	30.48	1	B30-R10000
∞	B30C-4000-595-OR	Orange	101.60	30.48	1	B30-R10000
∞	B30C-4000-595-PK	Pink	101.60	30.48	1	B30-R10000
∞	B30C-4000-595-PL	Purple	101.60	30.48	1	B30-R10000-WT
∞	B30C-4000-595-RD	Red	101.60	30.48	1	B30-R10000-WT
∞	B30C-4000-595-CL	Transparent	101.60	30.48	1	B30-R10000
∞	B30C-4000-595-WT	White	101.60	30.48	1	B30-R10000
∞	B30C-4000-595-YL	Yellow	101.60	30.48	1	B30-R10000

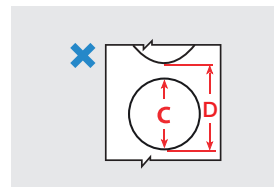


B-595 Printable inspection date labels

Print inspection and date labels when and how you need them

- ▶ Inspection date labels can be used wherever a frequent and regular inspection of machinery and equipment is required. One example is the indication of the inspection date of fire extinguishers. Print these labels yourself to customise for your specific situation.

Diagram	Order Reference	Colour	Diameter C (mm)	Vertical Repeat D (mm)	Labels per Roll	Printer Ribbon Series
✗	B30-D25-595-BL	Blue	25 mm	28.58	1000	B30-R10000-WT
✗	B30-D25-595-BR	Brown	25 mm	28.58	1000	B30-R10000-WT
✗	B30-D25-595-GN	Green	25 mm	28.58	1000	B30-R10000-WT
✗	B30-D25-595-GY	Grey	25 mm	28.58	1000	B30-R10000
✗	B30-D25-595-OC	Ochre	25 mm	28.58	1000	B30-R10000
✗	B30-D25-595-OR	Orange	25 mm	28.58	1000	B30-R10000
✗	B30-D25-595-PL	Purple	25 mm	28.58	1000	B30-R10000-WT
✗	B30-D25-595-WT	White	25 mm	28.58	1000	B30-R10000
✗	B30-D35-595-BL	Blue	35 mm	38.10	750	B30-R10000-WT
✗	B30-D35-595-BR	Brown	35 mm	38.10	750	B30-R10000-WT
✗	B30-D35-595-GN	Green	35 mm	38.10	750	B30-R10000-WT
✗	B30-D35-595-GY	Grey	35 mm	38.10	750	B30-R10000
✗	B30-D35-595-OC	Ochre	35 mm	38.10	750	B30-R10000
✗	B30-D35-595-OR	Orange	35 mm	38.10	750	B30-R10000
✗	B30-D35-595-PL	Purple	35 mm	38.10	750	B30-R10000-WT
✗	B30-D35-595-WT	White	35 mm	38.10	750	B30-R10000



FACILITY AND SAFETY IDENTIFICATION

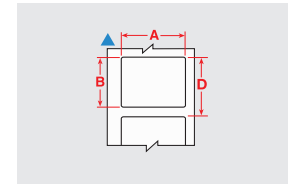
B-595 and B-7569 Pre-cut blank labels

For general purpose, peel-off-and-apply identification

- ▶ Ideal for a wide range of labelling applications
- ▶ Includes two sizes that are pre-cut and pre-sized to fit heavy-duty rigid tags
- ▶ Indoor/Outdoor grade material



Diagram	Order Reference	Colour	Label Width A (mm)	Label Height B (mm)	Vertical Repeat D (mm)	Labels per Roll	Printer Ribbon Series
B-595: Vinyl							
▲	B30-242-595-BLNKWT	White	28.58	72.39	82.55	300	B30-R10000
▲	B30-219-595-BLNKWT	White	57.15	97.79	107.95	250	B30-R10000
▲	B30-241-595-BLNKYL	Yellow	57.15	76.20	82.55	300	B30-R10000
▲	B30-241-595-BLNKWT	White	76.20	57.15	82.55	300	B30-R10000
▲	B30-25-595-BLNKYL	Yellow	101.60	152.40	158.75	175	B30-R10000
▲	B30-25-595-BLNKWT	White	152.40	101.60	158.75	175	B30-R10000
B-7569: Vinyl							
▲	B30-242-7569-WT	White	28.58	72.00	82.55	300	B30-R10000
▲	B30-241-7569-WT	White	57.00	75.00	82.55	300	B30-R10000
▲	B30-219-7569-WT	White	57.00	98.00	107.95	250	B30-R10000
▲	B30-241-7569-YL	Yellow	57.00	75.00	82.55	300	B30-R10000
▲	B30-25-7569-WT	White	101.00	152.00	158.75	175	B30-R10000
▲	B30-25-7569-YL	Yellow	101.00	152.00	158.75	175	B30-R10000



FACILITY AND SAFETY IDENTIFICATION

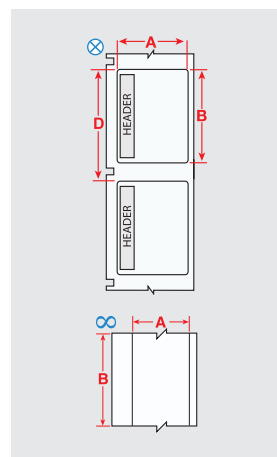


B-854 and B-855 ToughWash washdown resistant labels

Withstands pressures of high heat, harsh chemicals and numerous washdown cycles

- ▶ Ideal for use in the Food & Beverage industry
- ▶ Legible and long-lasting for even the toughest washdown cycles
- ▶ B-854 offers metal detectable layer to detect foreign debris in food stream

Diagram	Order Reference	Legend	Label Width A (mm)	Label Height B (mm)	Label Length B (m)	Vertical Repeat D (mm)	Labels per Roll	Printer Ribbon Series
B-854: Metal Detectable Polyester								
⊗	B30-25-854-WARN		101.60	152.40	-	158.75	100	B30-R6000
⊗	B30-25-854-DANG		101.60	152.40	-	158.75	100	B30-R6000
⊗	B30-25-854-CAUT		101.60	152.40	-	158.75	100	B30-R6000
∞	B30C-4000-854-WT		101.60	-	15.24	-	1	B30-R6000
∞	B30C-4000-854-YL		101.60	-	15.24	-	1	B30-R6000
B-855: Polyester								
⊗	B30-25-855-WARN		101.60	152.40	-	158.75	100	B30-R6000
⊗	B30-25-855-CAUT		101.60	152.40	-	158.75	100	B30-R6000
∞	B30C-1125-855-YL		28.58	-	15.24	-	1	B30-R6000
∞	B30C-1125-855-WT		28.58	-	15.24	-	1	B30-R6000
∞	B30C-2250-855-YL		57.15	-	15.24	-	1	B30-R6000
∞	B30C-2250-855-WT		57.15	-	15.24	-	1	B30-R6000
∞	B30C-4000-855-YL		101.60	-	15.24	-	1	B30-R6000
∞	B30C-4000-855-WT		101.60	-	15.24	-	1	B30-R6000

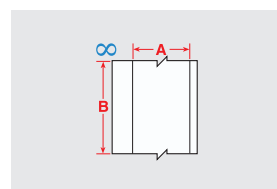


B-584 Retro reflective tape

For Highly reflective identification that shines back brightly when struck by light

- ▶ Ideal for labelling outdoor utility poles and pedestals, jobsite equipment and roof-top equipment
- ▶ Recommended low light or inclement weather conditions

Diagram	Order Reference	Colour	Width A (mm)	Length B (m)	Recommended Ribbon
∞	B30C-1125-584-OR	Orange	28.58	15.24	B30-R10000
∞	B30C-1125-584-SL	Silver	28.58	15.24	B30-R10000
∞	B30C-1125-584-YL	Yellow	28.58	15.24	B30-R10000
∞	B30C-2250-584-OR	Orange	57.15	15.24	B30-R10000
∞	B30C-2250-584-SL	Silver	57.15	15.24	B30-R10000
∞	B30C-2250-584-YL	Yellow	57.15	15.24	B30-R10000
∞	B30C-4000-584-OR	Orange	101.60	15.24	B30-R10000
∞	B30C-4000-584-SL	Silver	101.60	15.24	B30-R10000
∞	B30C-4000-584-YL	Yellow	101.60	15.24	B30-R10000



FACILITY AND SAFETY IDENTIFICATION

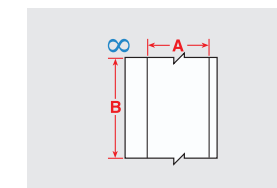
B-526 BradyGlo High-intensity photoluminescent tape

For glow-in-the dark identification - Up to 10 hours

- ▶ Designed for directional and evacuation marking
- ▶ Ideal for marking emergency utility shut-offs, fire extinguishers, alarm pulls and vital equipment controls



Diagram	Order Reference	Colour	Width A (mm)	Length B (m)	Recommended Ribbon
∞	B30C-1125-526	Photoluminescent Green	28.58	15.24	B30-R10000
∞	B30C-2250-526	Photoluminescent Green	57.15	15.24	B30-R10000
∞	B30C-4000-526	Photoluminescent Green	101.60	15.24	B30-R10000



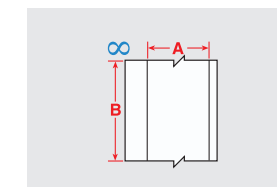
B-509 Printable magnetic supply

Easiest and quickest material for removing and repositioning

- ▶ Non-adhesive magnetic material that can be printed on directly
- ▶ Ideal for reusable and repositionable identification applications



Diagram	Order Reference	Colour	Width A (mm)	Length B (m)	Recommended Ribbon
∞	B30C-2500-509-WT	White	63.50	7.62	B30-R10000
∞	B30C-2500-509-YL	Yellow	63.50	7.62	B30-R10000
∞	B30C-4250-509-WT	White	107.95	7.62	B30-R10000
∞	B30C-4250-509-YL	Yellow	107.95	7.62	B30-R10000



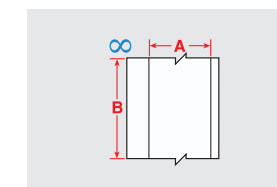
B-581 Repositionable vinyl

For 5S and lean applications

- ▶ Aggressive adhesive stays in place but removes cleanly without leaving adhesive residue
- ▶ Ideal for temporary, removable and repositionable labels, like 5S and lean inventory labels
- ▶ Service temp: -40 °C to 82 °C / Application temp: 10 °C to 82 °C



Diagram	Order Reference	Colour	Width A (mm)	Length B (m)	Recommended Ribbon
∞	B30C-500-581-WT	White	12.70	30.48	B30-R10000
∞	B30C-500-581-YL	Yellow	12.70	30.48	B30-R10000
∞	B30C-1125-581-WT	White	28.58	30.48	B30-R10000
∞	B30C-1125-581-YL	Yellow	28.58	30.48	B30-R10000
∞	B30C-2250-581-WT	White	57.15	30.48	B30-R10000
∞	B30C-2250-581-YL	Yellow	57.15	30.48	B30-R10000
∞	B30C-4000-581-WT	White	101.60	30.48	B30-R10000
∞	B30C-4000-581-YL	Yellow	101.60	30.48	B30-R10000



FACILITY AND SAFETY IDENTIFICATION

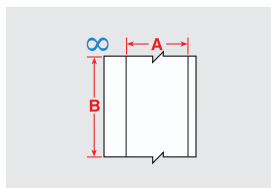


B-549 Cold temperature application material

For identification in temperature as cold as -40°C

- ▶ Special adhesive permanently adheres to extremely cold surfaces
- ▶ Ideal for cold storage warehouses, fridges, freezers and short-term outdoor use in winter
- ▶ Service temp: -40 °C to 100 °C
- ▶ Application temp: -23 °C to 100 °C

Diagram	Order Reference	Colour	Width A (mm)	Length B (m)	Recommended Ribbon
∞	B30C-1125-549-WT	White	28.58	30.48	B30-R10000
∞	B30C-1125-549-YL	Yellow	28.58	30.48	B30-R10000
∞	B30C-2250-549-WT	White	57.15	30.48	B30-R10000
∞	B30C-2250-549-YL	Yellow	57.15	30.48	B30-R10000
∞	B30C-4000-549-WT	White	101.60	30.48	B30-R10000
∞	B30C-4000-549-YL	Yellow	101.60	30.48	B30-R10000

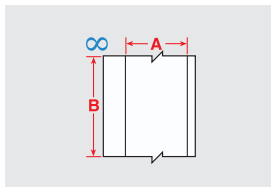


B-483 ToughStripe printable floor marking tape

Ships with B-634 Polyester Overlamine to protect your legend

- ▶ The ultra-aggressive adhesive allows for printable messages to be placed on the floor
- ▶ 3 step process : print the tape, apply it to the floor, apply the overlamine

Diagram	Order Reference	Colour	Width A (mm)	Length B (m)	Recommended Ribbon
∞	B30C-1125-483BL-KT	Blue	28.58	30.48	B30-R4400-WT
∞	B30C-1125-483GN-KT	Green	28.58	30.48	B30-R4400-WT
∞	B30C-1125-483RD-KT	Red	28.58	30.48	B30-R4400-WT
∞	B30C-1125-483WT-KT	White	28.58	30.48	B30-R6000
∞	B30C-1125-483YL-KT	Yellow	28.58	30.48	B30-R6000
∞	B30C-2250-483BK-KT	Black	57.15	30.48	B30-R4400-WT
∞	B30C-2250-483BL-KT	Blue	57.15	30.48	B30-R4400-WT
∞	B30C-2250-483GN-KT	Green	57.15	30.48	B30-R4400-WT
∞	B30C-2250-483OR-KT	Orange	57.15	30.48	B30-R6000
∞	B30C-2250-483RD-KT	Red	57.15	30.48	B30-R4400-WT
∞	B30C-2250-483WT-KT	White	57.15	30.48	B30-R6000
∞	B30C-2250-483YL-KT	Yellow	57.15	30.48	B30-R6000
∞	B30C-3000-483WT-KT	White	76.20	30.48	B30-R6000
∞	B30C-3000-483YL-KT	Yellow	76.20	30.48	B30-R6000
∞	B30C-4000-483BL-KT	Blue	101.60	30.48	B30-R4400-WT
∞	B30C-4000-483GN-KT	Green	101.60	30.48	B30-R4400-WT
∞	B30C-4000-483OR-KT	Orange	101.60	30.48	B30-R6000
∞	B30C-4000-483RD-KT	Red	101.60	30.48	B30-R4400-WT
∞	B30C-4000-483WT-KT	White	101.60	30.48	B30-R6000
∞	B30C-4000-483YL-KT	Yellow	101.60	30.48	B30-R6000



FACILITY AND SAFETY IDENTIFICATION

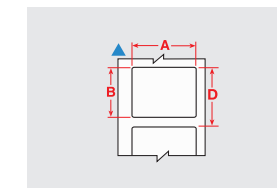
B-7569 Pre-printed CLP/GHS chemical labels

Print 2 colour CLP/GHS labels in one fast print pass

- ▶ Blank labels with pre-printed red diamonds allow printer to produce 2 colour CLP/GHS labels in one print pass
- ▶ 3 sizes of labels, each with 6 diamond layouts that match templates in Workstation software
- ▶ Indoor/outdoor vinyl material withstands exposure to moisture, chemicals and handling

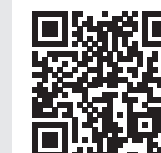


Diagram	Order Reference	Label Width A (mm)	Label Height B (mm)	Labels per Row	Labels per Roll	Printer Ribbon Series
▲	B30-260-7569-CLP1	84.99	55.00	1	340	R10000
▲	B30-260-7569-CLP2	84.99	55.00	1	340	R10000
▲	B30-260-7569-CLP3A	84.99	55.00	1	340	R10000
▲	B30-260-7569-CLP3B	84.99	55.00	1	340	R10000
▲	B30-260-7569-CLP4A	84.99	55.00	1	340	R10000
▲	B30-260-7569-CLP4B	84.99	55.00	1	340	R10000
▲	B30-261-7569-CLP1	110.00	75.00	1	270	R10000
▲	B30-261-7569-CLP2	110.00	75.00	1	270	R10000
▲	B30-261-7569-CLP3A	110.00	75.00	1	270	R10000
▲	B30-261-7569-CLP3B	110.00	75.00	1	270	R10000
▲	B30-261-7569-CLP4A	110.00	75.00	1	270	R10000
▲	B30-261-7569-CLP4B	110.00	75.00	1	270	R10000
▲	B30-262-7569-CLP1	154.99	104.98	1	200	R10000
▲	B30-262-7569-CLP2	154.99	104.98	1	200	R10000
▲	B30-262-7569-CLP3A	154.99	104.98	1	200	R10000
▲	B30-262-7569-CLP3B	154.99	104.98	1	200	R10000
▲	B30-262-7569-CLP4A	154.99	104.98	1	200	R10000
▲	B30-262-7569-CLP4B	154.99	104.98	1	200	R10000
▲	B30-18-7569-CLP4C	76.20	25.40	1	1000	R10000



▶ Easily create your GHS labels with Brady Workstation GHS App

- Use built-in pre-formatted label layouts with approved GHS symbols
- Search the built-in chemical database by CAS number to auto-populate your label, then edit to meet your specific SDS
- Print any of the six template sizes



DISCOVER BRADY WORKSTATION

www.bradyeurope.com/workstation

LABORATORY IDENTIFICATION

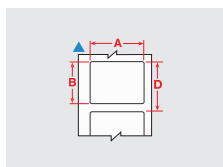


B-481 & B-488 Slide labels

Designed to provide crisp and clear sample identification throughout the sample generation, inspection and storage process

- ▶ Resistant to xylene, alcohol and DMSO

Diagram	Material	Special Properties	Label Width A (mm)	Label Height B (mm)	Order Reference	Printer Ribbon Series	Labels per Roll
▲	B-481	F H	22.86	9.53	B33-195-481	B30-R6400	3000
●	B-488	F A	22.86	19.05	B33-616-488	B30-R4300	3000
▲	B-481	F H	22.86	19.05	B33-194-481	B30-R6400	2000
●	B-488	F A	22.86	22.86	B33-617-488	B30-R4300	3000
●	B-481	F H	22.86	22.86	B33-141-481	B30-R6400	1500
▲	B-488	F A	48.26	6.35	B33-635-488	B30-R4300	2000

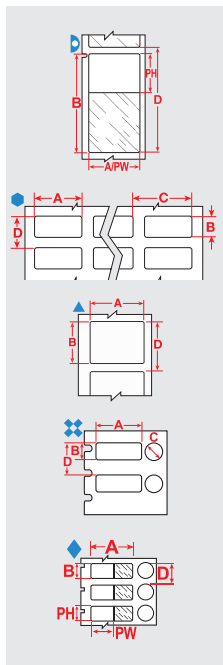


B-461, B-490, B-492, B-494, B-498 & B-499 Vial & tube labels

Always have clear, legible specimen samples

- ▶ Labels are designed to withstand extreme laboratory environments
- ▶ Resistant to laboratory solvents like Xylene, ethanol, alcohol and DMSO
- ▶ Identification is always legible – and will not smear, fade or fall off
- ▶ B-490, can be applied to frozen surfaces including glass and polypropylene stored in liquid nitrogen. Material must slightly overlap itself
- ▶ B-492, can be applied to frozen surfaces including glass and polypropylene stored in liquid nitrogen

Diagram	Material	Special Properties	Label Width A (mm)	Label Height B (mm)	Diameter C (mm)	Printable Area Width PW (mm)	Printable Area Height PH (mm)	Order Reference	Printer Ribbon Series	Labels per Roll
0.5 mL										
▷	B-461	F A H S L	5.08	22.86	-	5.08	18.29	B33-614-461	B30-R4300	2000
▷	B-461	F A H S L	6.35	27.94	-	6.35	22.09	B33-627-461	B30-R4300	1000
■	B-492	F H L	9.50	6.35	-	-	-	B33-289-492-WT	B30-R6400	1500
●	B-499	F A	12.70	19.05	-	-	-	B33-68-499	B30-R4300	1500
●	B-498	F A	12.70	19.05	-	-	-	B33-68-498	B30-R6200	5000
●	B-490	F H L	12.70	19.05	-	-	-	B33-68-490	B30-R4300	2500
▲	B-499	F A	12.70	25.40	-	-	-	B33-620-499	B30-R6000	1000
●	B-499	F A	12.70	25.40	-	-	-	B33-611-499	B30-R6000	3000
▲	B-499	F A	22.86	12.70	-	-	-	B33-125-499	B30-R4300	1500
▲	B-490	F H L	22.86	12.70	-	-	-	B33-125-490	B30-R4300	1650
■	B-499	F A	22.86	12.70	12.70	-	-	B33-126-499	B30-R4300	1500
■	B-490	F H L	22.86	12.70	12.70	-	-	B33-126-490	B30-R4300	2500
●	B-499	F A	25.40	9.53	-	-	-	B33-152-499	B30-R4300	1500
●	B-492	F H L	25.40	9.53	-	-	-	B33-152-492	B30-R6400	2500
■	B-499	F A	25.40	9.53	9.53	-	-	B33-163-499	B30-R4300	1500
■	B-492	F H L	25.40	9.53	9.53	-	-	B33-163-492	B30-R6400	1500
◆	B-461	F A H S L	25.40	9.53	9.53	25.40	9.53	B33-606-461	B30-R4300	1000
▲	B-499	F A	25.40	12.45	-	-	-	B33-659-499	B30-R6000	1000
▲	B-492	F H L	25.40	12.70	-	-	-	B33-59-492	B30-R6400	2500
●	B-499	F A	25.40	12.70	-	-	-	B33-5-499	B30-R6000	5000
■	B-492	F H L	25.40	12.70	9.53	-	-	B33-181-492	B30-R6400	1500
■	B-492	F H L	25.40	12.70	11.18	-	-	B33-182-492	B30-R6400	1500
●	B-461	F A H S L	55.88	12.70	-	19.05	12.70	B33-127-461	B30-R4300	1500
1.5 mL										
/	B-461	F A H L	-	-	9.53	-	-	B33-602-461AW	B30-R4300	3000
●	B-499	F A	19.05	6.35	-	-	-	B33-1-499	B30-R6000	10000
▲	B-499	F A	19.05	19.05	-	-	-	B33-254-499	B30-R6000	1000
●	B-499	F A	19.05	23.80	-	-	-	B33-91-499	B30-R6000	2500
●	B-499	F A	25.40	19.05	-	-	-	B33-88-499	B30-R6000	2500
▷	B-461	F A H S L	66.68	15.24	-	25.40	15.24	B33-153-461	B30-R4300	1500



F Freezer environment N Liquid nitrogen environment A Autoclave environment H Hot water bath (100°C) S Self-laminating label L Low-profile (extremely thin) label R Removable

LABORATORY IDENTIFICATION

B-461, B-490, B-492, B-494, B-498 & B-499 Vial & tube labels (continued)

Always have clear, legible specimen samples



Diagram	Material	Special Properties	Label Width A (mm)	Label Height B (mm)	Diameter C (mm)	Printable Area Width PW (mm)	Printable Area Height PH (mm)	Order Reference	Printer Ribbon Series	Labels per Roll
2.0 mL										
●	B-499	F A	6.35	36.50	-	-	-	B33-90-499	B30-R6000	2500
●	B-461	F A H S L	15.24	38.10	-	15.24	33.02	B33-628-461	B30-R4300	2500
●	B-461	F A H S L	15.24	66.68	-	15.24	25.40	B33-612-461	B30-R4300	1500
●	B-461	F A H S L	19.05	38.10	-	19.05	33.02	B33-629-461	B30-R4300	2500
▲	B-492	F H L	22.86	25.40	-	-	-	B33-180-492	B30-R6400	1500
■	B-494	F H	25.40	9.53	9.53	-	-	B33-304-494-BL	-	1500
■	B-494	F H	25.40	9.53	9.53	-	-	B33-304-494-GN	-	1500
■	B-494	F H	25.40	9.53	9.53	-	-	B33-304-494-OR	-	1500
■	B-494	F H	25.40	9.53	9.53	-	-	B33-304-494-PK	-	1500
■	B-494	F H	25.40	9.53	9.53	-	-	B33-304-494-RD	-	1500
■	B-494	F H	25.40	9.53	9.53	-	-	B33-304-494-YL	-	1500
▲	B-494	F H	25.40	12.70	-	-	-	B33-310-494-BL	-	2500
▲	B-494	F H	25.40	12.70	-	-	-	B33-310-494-GN	-	2500
▲	B-494	F H	25.40	12.70	-	-	-	B33-310-494-OR	-	2500
▲	B-494	F H	25.40	12.70	-	-	-	B33-310-494-PK	-	2500
▲	B-494	F H	25.40	12.70	-	-	-	B33-310-494-RD	-	2500
▲	B-494	F H	25.40	12.70	-	-	-	B33-310-494-YL	-	2500
▷	B-492	F H L	25.40	25.40	-	-	-	B33-179-492	B30-R6400	1900
▷	B-461	F A H S L	44.45	25.40	-	25.40	25.40	B33-183-461	B30-R4300	2000
4.0 mL										
●	B-499	F A	12.70	36.50	-	-	-	B33-87-499	B30-R6000	2500
▷	B-461	F A H S L	15.24	48.26	-	15.24	39.88	B33-638-461	B30-R4300	2000
●	B-499	F A	25.40	36.50	-	-	-	B33-621-499	B30-R6000	3000
●	B-499	F A	25.40	36.50	-	-	-	B33-89-499	B30-R6000	2300
▷	B-461	F A H S L	34.93	45.72	-	34.93	39.88	B33-632-461	B30-R4300	1500
▲	B-492	F H L	41.28	15.24	-	-	-	B33-155-492	B30-R6400	1500
▲	B-490	F H L	41.28	15.24	-	-	-	B33-155-490	B30-R4300	1500
●	B-461	F A H S L	41.28	15.24	-	25.40	15.24	B33-133-461	B30-R4300	1500
■	B-492	F H L	41.28	15.24	9.53	-	-	B33-190-492	B30-R6400	1500
○	B-461	F A H S L	41.28	15.24	12.70	41.28	15.24	B33-608-461	B30-R4300	1000
▲	B-490	F H L	50.80	6.35	-	-	-	B33-151-490	B30-R4300	2500
●	B-461	F A H S L	66.68	25.40	-	25.40	25.40	B33-276-461	B30-R4300	1500
▷	B-461	F A H S L	88.90	38.10	-	31.75	38.10	B33-134-461	B30-R4300	1000
8.0 mL										
●	B-498	F R	19.05	23.80	-	-	-	B33-91-498	B30-R6200	2500
●	B-498	F R	25.40	19.05	-	-	-	B33-88-498	B30-R6200	2500
●	B-499	F A	25.40	66.68	-	-	-	B33-625-499	B30-R6000	1500
▲	B-494	F H	41.28	15.24	-	-	-	B33-302-494-BL	-	1500
▲	B-494	F H	41.28	15.24	-	-	-	B33-302-494-GN	-	1500
▲	B-494	F H	41.28	15.24	-	-	-	B33-302-494-OR	-	1500
▲	B-494	F H	41.28	15.24	-	-	-	B33-302-494-PK	-	1500
▲	B-494	F H	41.28	15.24	-	-	-	B33-302-494-RD	-	1500
▲	B-494	F H	41.28	15.24	-	-	-	B33-302-494-YL	-	1500
▲	B-492	F H L	48.26	25.40	-	-	-	B33-156-492	B30-R6400	1500
▲	B-490	F H L	48.26	25.40	-	-	-	B33-156-490	B30-R4300	1500
▲	B-461	F A H L	48.26	25.40	-	48.26	-	B33-636-461AW	B30-R4300	2000
15.0 mL										
/	B-461	F A H L	-	-	15.24	-	-	B33-604-461AW	B30-R4300	3000
▲	B-490	F H L	55.88	38.10	-	-	-	B33-157-490	B30-R4300	1000
●	B-461	F A H S L	133.35	25.40	-	38.10	25.40	B33-139-461	B30-R4300	650



F Freezer environment N Liquid nitrogen environment A Autoclave environment H Hot water bath (100°C) S Self-laminating label L Low-profile (extremely thin) label R Removable

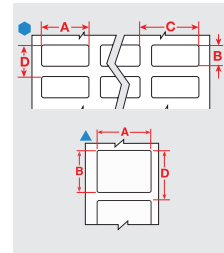
LABORATORY IDENTIFICATION



B-461, B-490, B-492, B-494, B-498 & B-499 Vial & tube labels (continued)

Always have clear, legible specimen samples

Diagram	Material	Special Properties	Label Width A (mm)	Label Height B (mm)	Diameter C (mm)	Printable Area Width PW (mm)	Printable Area Height PH (mm)	Order Reference	Printer Ribbon Series	Labels per Roll
25.0 mL										
●	B-498	F	R	12.70	36.50	-	-	B33-87-498	B30-R6200	2500
●	B-499	F A		25.40	63.50	-	-	B33-325-499	B30-R6000	700
▲	B-461	F A H L		57.15	19.05	-	57.15	B33-642-461AW	B30-R4300	2000
▲	B-461	F A H L		88.90	38.10	-	88.90	B33-650-461AW	B30-R4300	2000
50.0 mL										
▲	B-498	F	R	19.05	19.05	-	-	B33-254-498	B30-R6200	1000
●	B-498	F	R	25.40	12.70	-	-	B33-5-498	B30-R6200	5000
●	B-498	F	R	25.40	36.50	-	-	B33-89-498	B30-R6200	2300
●	B-498	F	R	25.40	63.50	-	-	B33-325-498	B30-R6200	700
●	B-499	F A		25.40	101.60	-	-	B33-326-499	B30-R6000	450
●	B-498	F	R	25.40	101.60	-	-	B33-326-498	B30-R6200	450
●	B-499	F A		38.10	101.60	-	-	B33-327-499	B30-R6000	450
●	B-498	F	R	38.10	101.60	-	-	B33-327-498	B30-R6200	450
●	B-499	F A		38.10	152.40	-	-	B33-328-499	B30-R6000	300
●	B-498	F	R	38.10	152.40	-	-	B33-328-498	B30-R6200	300



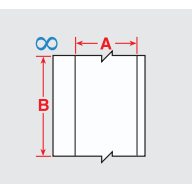
B-403 Water dissolvable label

The label dissolves within 30 seconds exposure to water

Diagram	Material	Special Properties	Label Width A (mm)	Label Length B (mm)	Order Reference	Printer Ribbon Series	Labels per Roll	
∞	B-403		R	28.58	30.48	B30C-1125-403-WT	M61-R4300	1
∞	B-403		R	57.15	30.48	B30C-2250-403-WT	M61-R4300	1
∞	B-403		R	76.20	30.48	B30C-3000-403-WT	M61-R4300	1
∞	B-403		R	101.60	30.48	B30C-4000-403-WT	M61-R4300	1



LEARN MORE ABOUT DISSOLVABLE LABELS



LABORATORY IDENTIFICATION

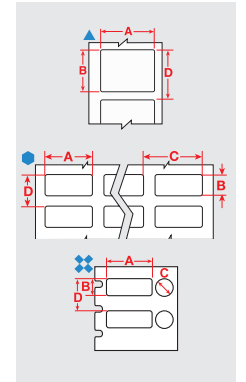
B-7425 Polypropylene labels

Track almost any sample in the lab

- ▶ Offers excellent all-purpose sample traceability
- ▶ Stays attached to vials, tubes, slides and well plates
- ▶ Remains legible when exposed to chemicals and extreme temperatures



Diagram	Material	Special Properties	Label Width A (mm)	Label Height B (mm)	Diameter C (mm)	Order Reference	Printer Ribbon Series	Labels per Roll
0.5 mL								
▲	B-7425	F A H	50.80	12.70	-	B33-53-7425	B30-R4300	2000
●	B-7425	F A H	25.40	9.53	-	B33-152-7425	B30-R4300	2000
⋈	B-7425	F A H	25.40	9.53	9.53	B33-249-7425	B30-R4300	1500
▲	B-7425	F A H	25.40	12.70	-	B33-59-7425	B30-R4300	2000
⋈	B-7425	F A H	25.40	12.70	11.18	B33-251-7425	B30-R4300	1500
1.5 mL								
●	B-7425	F A H	25.40	19.05	-	B33-88-7425	B30-R4300	2000
2.0 mL								
▲	B-7425	F A H	20.96	6.35	-	B33-257-7425	B30-R4300	1500
▲	B-7425	F A H	25.40	25.40	-	B33-179-7425	B30-R4300	1500
▲	B-7425	F A H	33.02	15.24	-	B33-256-7425	B30-R4300	1500
4.0 mL								
●	B-7425	F A H	38.10	12.70	-	B33-37-7425	B30-R4300	1500
▲	B-7425	F A H	38.10	19.05	-	B33-136-7425	B30-R4300	1500
▲	B-7425	F A H	38.10	25.40	-	B33-235-7425	B30-R4300	1250
▲	B-7425	F A H	38.10	44.45	-	B33-258-7425	B30-R4300	900
▲	B-7425	F A H	50.80	6.35	-	B33-151-7425	B30-R4300	2000
8.0 mL								
▲	B-7425	F A H	50.80	25.40	-	B33-137-7425	B30-R4300	1500



B-7425-AC Sterilisation indicating labels

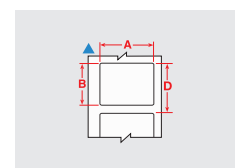
Label confirms successful sterilisation



LEARN MORE ABOUT STERILIZATION INDICATING LABELS



Diagram	Material	Special Properties	Label Width A (mm)	Label Height B (mm)	Printable Area Width PW (mm)	Order Reference	Printer Ribbon Series	Labels per Roll
4.0 mL								
▲	B-7425		38.10	25.40	38.10	B33-235-7425-AC	B30-R4300	1250
8.0 mL								
▲	B-7425		50.80	25.40	50.80	B33-137-7425-AC	B30-R4300	1500



ACCESSORIES

USB-C Cable for i4311 Printer

► Connect devices and data to the i4311 Printer with this USB-C Cable.

Article No.	Order Reference	Description	Quantity / Package
178935	USB-C-CABLE	USB-C Cable for i4311 Printer	1



AC Adapter for i4311 Printer Battery

► Use this AC Adapter to charge the related battery for the i4311 Industrial Label Printer with Portability.

Article No.	Order Reference	Description	Quantity / Package
178931	65W-AC-GLOBAL	AC Adapter for i4311 Printer Battery	1



Rechargeable Li-ion Battery Pack for i4311 Printer

► Power your i4311 Printer with this long-lasting, reliable battery.

Article No.	Order Reference	Description	Quantity / Package
178932	I4311-BATT	Rechargeable Li-ion Battery Pack for i4311 Printer	1



Soft Case for i4311 Printer

► Keep your i4311 Industrial Label Printer organised and protected with this Soft Case.

Article No.	Order Reference	Description	Quantity / Package
178933	I4311-SC	Soft Case for i4311 Printer	1



Material Hard Case for i4311 Printer

► Protect, transport and store accessories, label materials, ribbon rolls and a spare battery for the i4311 Printer with this Hard Case.

Article No.	Order Reference	Description	Quantity / Package
178934	I4311-HC	Material Hard Case for i4311 Printer	1



PRINTER SPECIFICATIONS

Printer	
Colour Capability	Monocolour
Print Speed (mm/sec)	101.60
Print Resolution (dpi)	300
Printing Functions	Auto dpi conversion for ZPL
Internal Memory Capacity	1 GB RAM, 8 GB Flash
Width x Height x Depth (mm)	228.6 x 241.3 x 330.2
Stand-alone Printing (Detached from PC)	Mobile device connected, Stand-alone & Peripheral
Weight (kg)	5.85
Warranty	1 year

Media	
Continuous vs Die-cut Labels	Continuous, Die-cut, Custom
Compatible Media	B30-, B30C-, B30EP-, B33-, B33C-, B33D-, B33FP-, B33R-, B33FT-
Min. Label Width (mm)	6.35
Max. Label Width (mm)	107.95
Min. Label Height (mm)	6.35
Min. Liner Width (mm)	18.03
Max. Liner Width (mm)	107.95
Max. Print Width (mm)	101.98
Recommended Usage per Day	5000

Display	
Display	Colour LCD Touchscreen
On Screen Indicators	Bluetooth Status, Digital Clock, Error Messaging, Ribbon and label part number recognition, Ribbon Remaining, USB Connection, WiFi, Supply Remaining, Data Reception

Software & connectivity	
Connectivity Options	Bluetooth, Ethernet, USB-C, Wi-Fi, Cabled, USB-A
Software Compatibility	Brady Workstation Express Labels Mobile App Windows based driver for 3rd party software use Software development kit Brady LINK360®
Programming Language	Built-in ZPL Emulator

Compliance	
Approval/Compliance	CE





Belgium & Luxembourg

+32 (0) 52 45 78 11
benelux@bradycorp.com

Czech Republic

+420 776 302 229
czechrepublic@bradycorp.com

Denmark

+45 66 14 44 00
denmark@bradycorp.com

France

+33 (0) 3 20 76 94 48
france@bradycorp.com

Germany, Austria & Switzerland

+49 (0) 6103 7598 660
germany@bradycorp.com

Hungary

+36 23 500 275
hungary@bradycorp.com

Italy

+39 02 26 00 00 22
italy@bradycorp.com

Netherlands

+31 (0)70 323 62 98
benelux@bradycorp.com

Norway

+47 70 13 40 00
norway@bradycorp.com

Poland

+48 22 104 6262
poland@bradycorp.com

Qatar, Saudi Arabia & UAE

+971 4881 2524
me@bradycorp.com

Slovakia

+421 902 939 406
slovakia@bradycorp.com

South Africa

+27 11 704 3295
africa@bradycorp.com

Spain & Portugal

+34 900 902 993
spain@bradycorp.com
portugal@bradycorp.com

**Sweden, Finland, Estonia, Latvia,
Lithuania**

+46 (0) 8 590 057 30
sweden@bradycorp.com

Turkey

+90 212 264 02 20
turkey@bradycorp.com

UK & Ireland

+44 (0) 1295 228 288
uk@bradycorp.com

We make products that make the world a safer and smarter place. From the depths of the ocean to outer space, from the factory floor to the delivery room - **we're just about everywhere you look.**



To help minimise our impact on the environment, Brady limits its number of reprints.

Updated versions are always available for download on bradyeurope.com/downloads.



Search for: EUR-M-650-EN



Y8319692

Your distributor

13/04/2026